



2 Field View  
Feltham TW13 4RZ  
£495,000



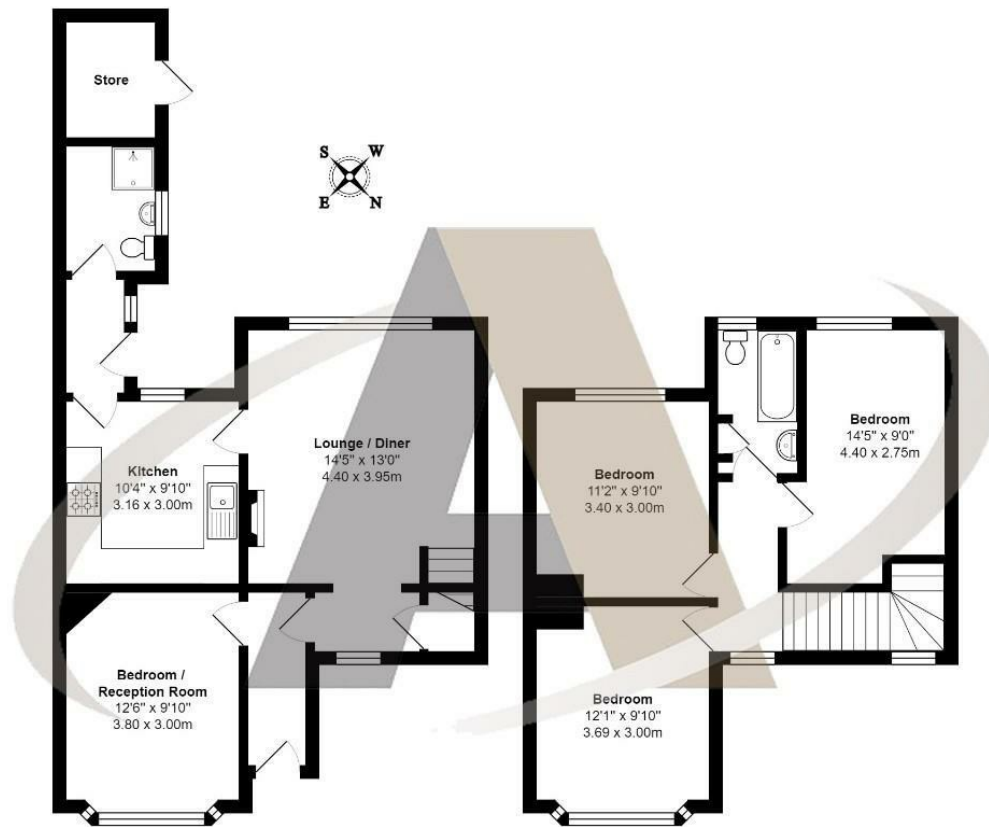
## 2 Field View, Feltham, TW13 4RZ

Aspen Residential are delighted to introduce this lovely 3 / 4 Bedroom Semi-Detached house to the market. Field View is a sought after, private road on the borders of Ashford and Lower Feltham offering easy access to both towns as well as many of the areas local amenities and transport links. This property has scope to extend (stpp) and currently offers 3 double bedrooms and the family bathroom upstairs. Downstairs there is an optional fourth bedroom or additional reception room, a large lounge / diner, kitchen with ample worktop space & storage cupboards and a downstairs shower room and utility. This property overlooks fields to the front, has a sunny garden to the rear and off road parking for multiple vehicles.

A rare opportunity to purchase in a popular location - viewings are highly recommended and can be booked by calling Aspen Residential.



## Floor Plan



Field View, Feltham

Total Area: 1098 ft² ... 102.0 m²

All measurements are approximate and for display purposes only

## Area Map



## Features

- Large Reception Room
- Off Road Parking
- 3 / 4 Bedrooms
- Borders of Ashford & Lower Feltham
- Private Road
- Downstairs Shower Room
- Convenient for Transport
- Views over Fields



