



22 Southfields Avenue, Ashford, TW15 1LB

£680,000

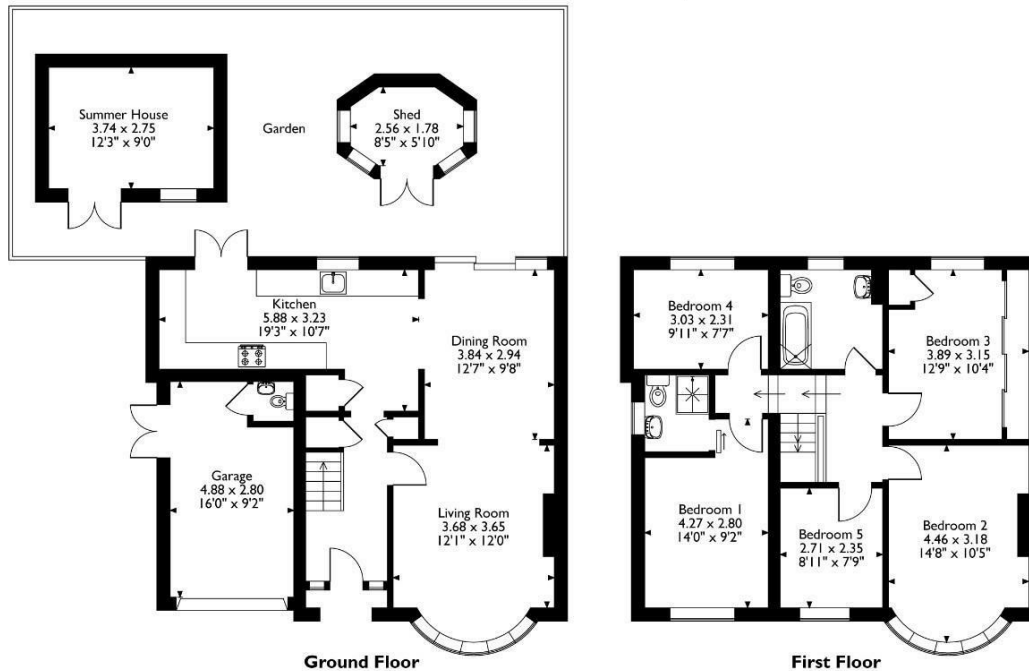
22 Southfields Avenue, Ashford, TW15 1LB

A deceptively spacious and versatile five bedroom, two bathroom, two reception room extended family home, situated in one of Ashford's premier roads within walking distance of the best local schools, town centre, station and recreation parks. The property benefits from a large corner plot rear garden, five good size bedrooms, summer house with fitted bar, own drive offering ample parking and further potential to extend (S.T.P.P.).
Call the vendors chosen sole agents on 01784 252202.



Floor Plan

22 Southfields Avenue, Ashford, Surrey
 Approximate Gross Internal Area
 Main House = 121 Sq M/1303 Sq Ft
 Garage = 14 Sq M/151 Sq Ft
 Outbuilding = 14 Sq M/151 Sq Ft
 Total = 149 Sq M/1605 Sq Ft



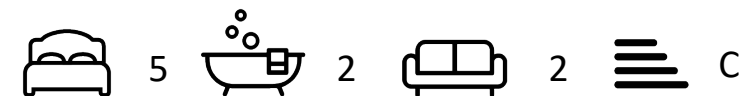
Please note that the location of doors, windows and other items are approximate and this floorplan is to be used for illustrative purposes only. Unauthorized reproduction is prohibited.



Features

- Five Bedrooms
- Two Reception Rooms
- Potential To Further Extend (S.T.P.P.)
- Garage
- Two Bathrooms
- Large Corner Plot Garden
- Own Drive
- Close To Schools

Aspen Residential Services
 77 Church Road, Ashford, Surrey, TW15 2PE
 Tel: 01784 252 202
 Email: enquiries@aspensalesandlettings.com



Tenure - Freehold Council Tax Band - E

