



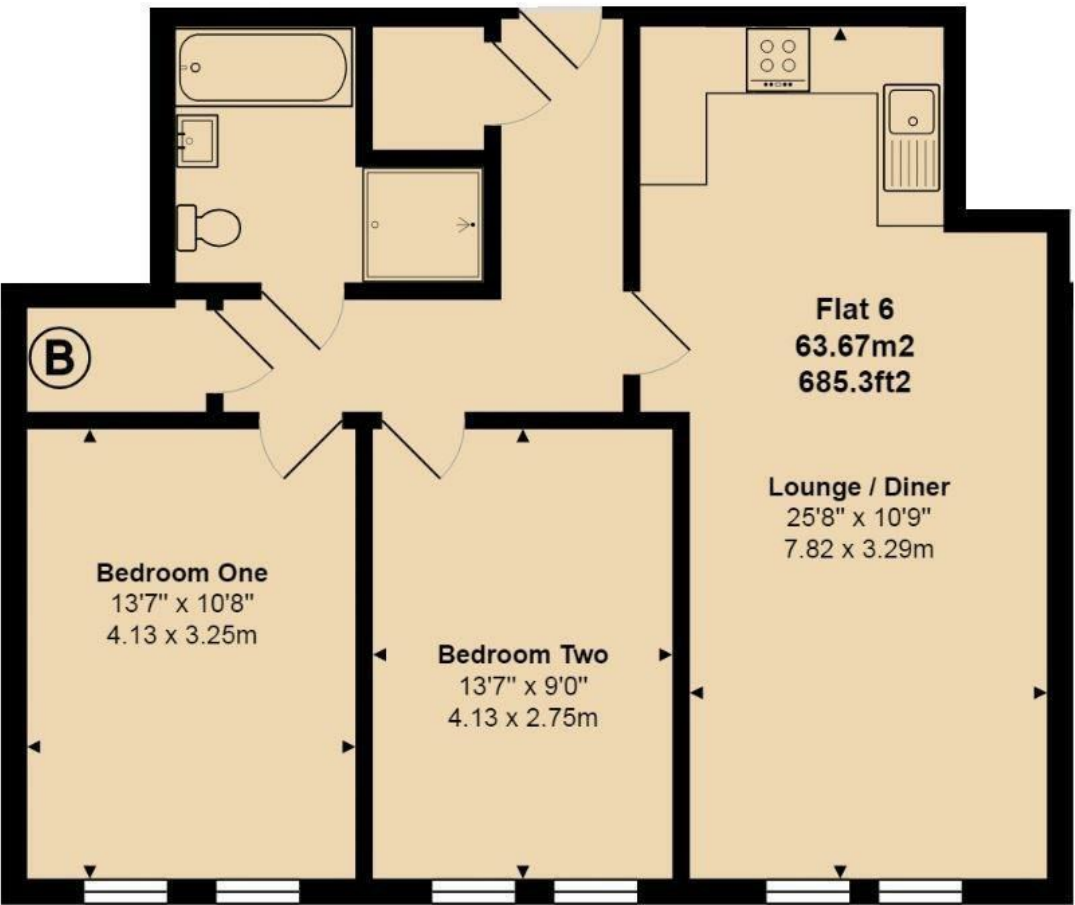
6 Beatrice Court Clarendon Road, Ashford, TW15 2QE

Beatrice Court is a stunning, recently built development by Hoopers Homes Ltd, offering a collection of just ten exclusive apartments. Ideally situated in the heart of Ashford, this property provides convenient access to local shops and the mainline station, making it perfect for those who value both comfort and connectivity. This high-quality, first-floor apartment is designed to the highest standards, featuring a luxury fitted kitchen and bathroom, a modern video entry system, and gas central heating. With the added benefit of allocated parking and beautifully maintained communal gardens, Beatrice Court offers a serene and secure living environment.

Built in 2020, this apartment showcases contemporary design and premium finishes, providing a fresh and inviting atmosphere. Whether you are a first-time buyer, downsizing, or looking for an investment opportunity, this apartment is priced to sell, with a 120 year lease and ready for immediate occupancy. Don't miss the chance to be a part of this exclusive community. For more information or to arrange a viewing, please contact the Aspen New Homes department on 01784 252202.



Floor Plan



Features

- Beatrice Court is a recently built development by Hoopers Homes Ltd
- The first-floor apartment is designed to the highest standards
- The kitchen comes with a host of integrated appliances
- Enjoy access to well-maintained communal gardens
- Situated in the heart of Ashford
- Equipped with a modern video entry system and gas central heating
- Each apartment comes with its own allocated parking space
- 120-Year Lease

Aspen Residential Services
77 Church Road, Ashford, Surrey, TW15 2PE
Tel: 01784 252 202
Email: enquiries@aspensalesandlettings.com



Tenure - Leasehold Council Tax Band - C

