



452a London Road, Ashford, TW15 3AD

£345,000



## 452a London Road, Ashford, TW15 3AD

Step inside this immaculately presented first-floor maisonette and be greeted by a warm and inviting atmosphere. The property features three very good sized bedrooms, a modern kitchen complete with built in oven and hob and a well-maintained shower room, ensuring your comfort and convenience.

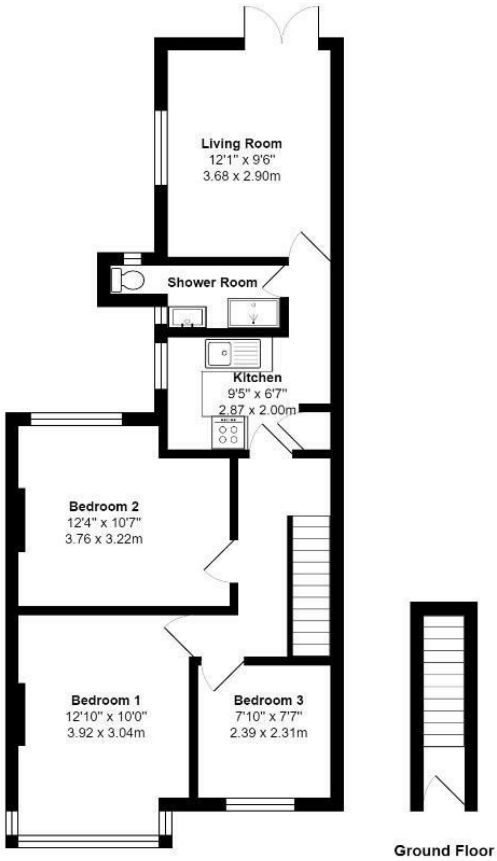
One of the highlights of this lovely home is the private rear garden, a tranquil oasis where you can enjoy the outdoors in peace and privacy. Measuring an impressive 39' by 18', this outdoor space is ideal for hosting summer barbecues or simply basking in the sunshine.

With a long lease in excess of 900 years, you can rest assured that this property offers stability and security for years to come. Additionally, the two parking spaces to the rear provide convenient parking options for you and your guests.

Don't miss out on the opportunity to make this house your home sweet home. Contact us today to arrange a viewing and take the first step towards owning this wonderful property on London Road!



Floor Plan



London Road, Ashford, TW15 3AD

Total Area: 655 ft² ... 60.9 m²

All measurements are approximate and for display purposes only



Features

- FIRST FLOOR MAISONETTE
- LIVING ROOM WITH ACCESS DOWN TO THE REAR GARDEN
- SHOWER ROOM
- LONG LEASE OVER 900 YEARS
- THREE BEDROOMS
- KITCHEN WITH OVEN AND HOB
- 39' BY 18' PRIVATE REAR GARDEN
- PARKING TO THE REAR FOR TWO CARS

Aspen Residential Services  
77 Church Road, Ashford, Surrey, TW15 2PE  
Tel: 01784 252 202  
Email: enquiries@aspensalesandlettings.com



Tenure - Share of Freehold Council Tax Band -



