





# 14 Fairview Court Manor Road, Ashford, TW15 2SN

Set within beautifully manicured gardens, this larger-than-average apartment is perfect for downsizers and first-time buyers alike. The accommodation comprises a large, bright reception room with a south-facing balcony, ideal for relaxing and enjoying the sun. The principal bedroom is generously sized and features built-in wardrobes, while the second bedroom is also a good-sized double with its own built-in storage.

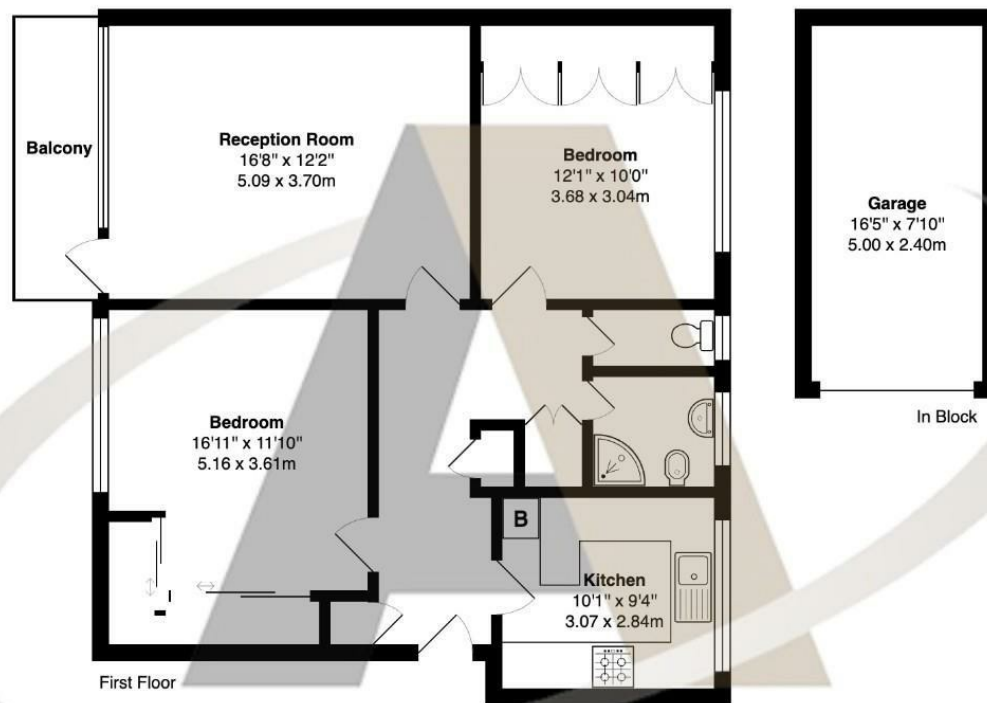
The apartment includes a modern shower room, a separate WC, and a spacious kitchen. Additional features that add to the appeal of this home are gas central heating, double glazing, three handy storage cupboards, and a garage located in the block.

Situated on Manor Road, one of the most desirable residential roads in Ashford, this property offers new owners the scope to modernise and personalise their space while benefiting from the proximity to Ashford town centre. Local amenities, the train station, and other transport links are all just a short walk away, making this an ideal location for convenience and connectivity.

This property is offered to the market with a long lease of 941 years and no onward chain. This apartment is expected to attract significant interest, and prompt viewings are encouraged. To arrange your viewing, please call Aspen Estate Agents today.



## Floor Plan



**Fairview Court, Manor Road, Ashford**

Total Area: 947 ft<sup>2</sup> ... 88.0 m<sup>2</sup>

All measurements are approximate and for display purposes only



## Features

- Two Bedroom, First Floor Apartment
- Large Principal Bedroom
- Well-Appointed Kitchen
- Double glazing
- No Onward Chain
- Spacious and Bright Reception Room
- Shower Room and Separate WC
- Gas central heating
- Garage in the block

Aspen Residential Services  
77 Church Road, Ashford, Surrey, TW15 2PE  
Tel: 01784 252 202  
Email: [enquiries@aspensalesandlettings.com](mailto:enquiries@aspensalesandlettings.com)



Tenure - Leasehold Council Tax Band - D



