



24 Tudor Road, Ashford, TW15 1QW

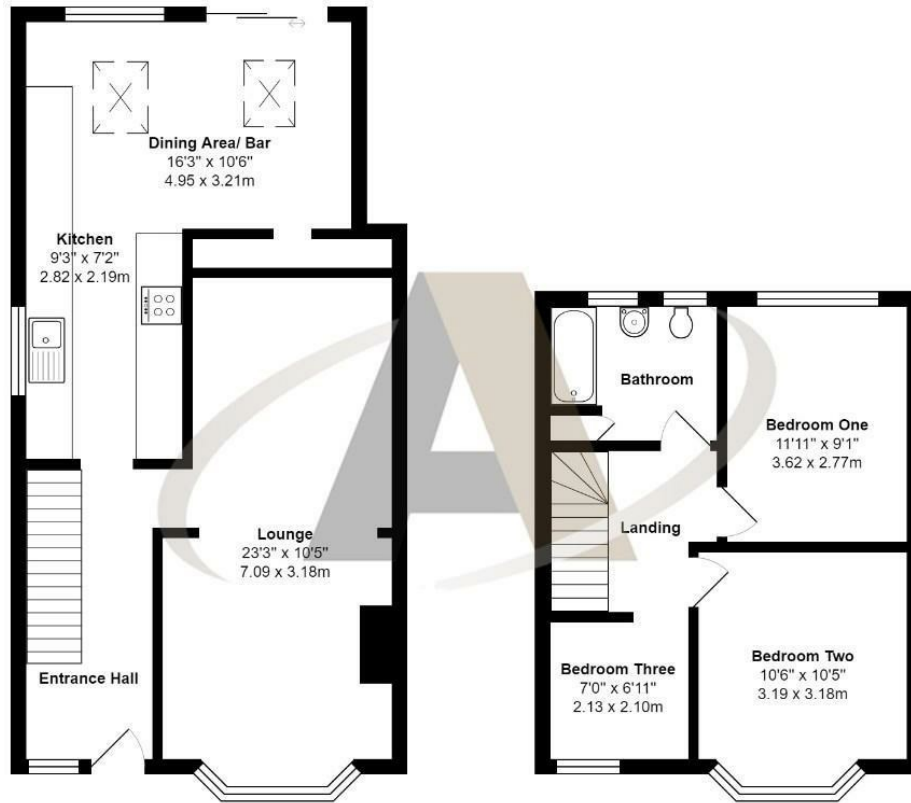
£550,000

24 Tudor Road, Ashford, TW15 1QW

This well presented extended three bedroom semi detached home offers good size flexible accommodation with the potential to extend further (stpp). Accommodation comprises of lounge, dining room/ bar and three good sized bedrooms. Other notable features include a modern re-fitted bathroom, gas central heating, double glazing, re-fitted kitchen, driveway parking and a large enclosed private rear garden in excess of 90' deep. The property also benefits from being within a short distance to Ashford town centre and a host of local amenities. There are also good road links to the M25, M3 & M4 and the property is within catchment to some of the most popular local schools.



Floor Plan



Tudor Road, Ashford, TW15 1QW

Total Area: 1091 ft² ... 101.3 m²

All measurements are approximate and for display purposes only



Features

- Three Bedrooms
- Re-Fitted Kitchen
- Modern Re- Fitted Bathroom
- Large Enclosed Private Rear Garden
- 23' Lounge
- Dining Room/Bar
- Driveway Parking

Aspen Residential Services
 77 Church Road, Ashford, Surrey, TW15 2PE
 Tel: 01784 252 202
 Email: enquiries@aspensalesandlettings.com

