



24 Edgell Road, Staines-Upon-Thames, TW18 2ES

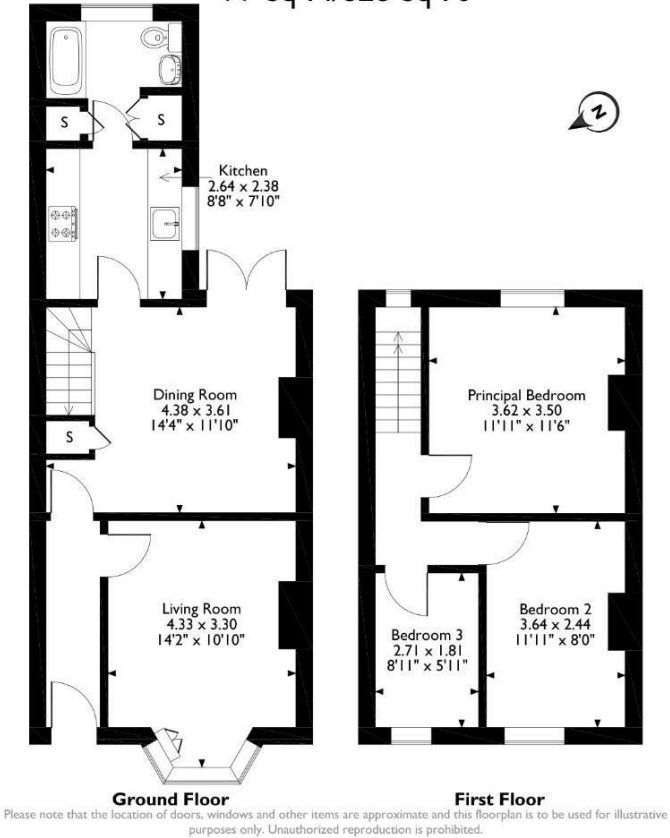
Nestled on a picturesque residential street in the heart of Staines town centre, this charming period home effortlessly combines timeless character with modern convenience. Just a short stroll from the scenic Staines riverside and bustling high street, you'll have easy access to a variety of shops, restaurants, a cinema, and health clubs. The property welcomes you with a bright entrance hallway leading into a cosy lounge featuring a traditional fireplace and sash bay window, perfect for relaxed evenings. A spacious dining area, which doubles as a second reception room, provides an ideal setting for family meals or entertaining guests, and benefits from French doors opening directly onto the garden, seamlessly blending indoor and outdoor living.

The beautifully presented kitchen has been finished to a high standard and includes a ceramic sink with mixer tap, integrated appliances including a dishwasher and fridge freezer, as well as a built-in oven and gas hob. Upstairs, the property offers a generously sized master bedroom with a charming feature fireplace and garden views, a second comfortable double bedroom, and a well-proportioned single bedroom. The modern family bathroom is conveniently located on the ground floor. Outside, the private rear garden offers a spacious patio perfect for al fresco dining, with the remainder laid to lawn. Additional highlights include double-glazed sash windows throughout, elegant wooden flooring, and gas central heating. This delightful home must be viewed to truly appreciate its superb location, space, and beautiful interiors.



Floor Plan

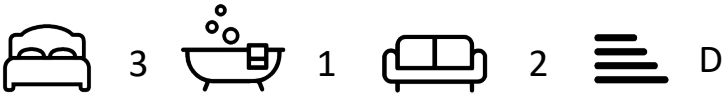
24, Edgell Road, Staines-upon-Thames, Surrey
Approximate Gross Internal Area
77 Sq M/828 Sq Ft



Features

- Located on a charming residential street in the heart of Staines town centre
- Bright entrance hallway leading to a cosy lounge with traditional fireplace and sash bay window
- High-spec kitchen with ceramic sink, built-in oven and hob, and integrated appliances
- Modern ground floor family bathroom with stylish fittings
- Just moments from the scenic Staines riverside, shops, restaurants, cinema, and health clubs
- Spacious dining/second reception room with French doors to the garden, ideal for entertaining
- Three bedrooms upstairs, including a large master with feature fireplace and garden views
- Private rear garden with spacious patio and lawn

Aspen Residential Services
77 Church Road, Ashford, Surrey, TW15 2PE
Tel: 01784 252 202
Email: enquiries@aspensalesandlettings.com



Tenure - Freehold Council Tax Band -

