



72 Metcalf Road, Ashford, TW15 1HA

£435,000

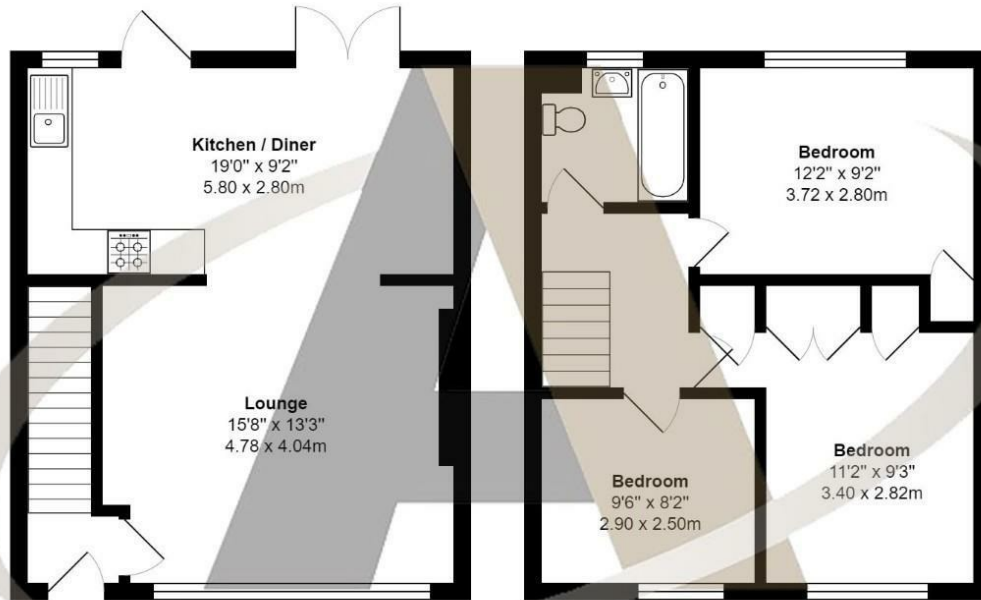
72 Metcalf Road, Ashford, TW15 1HA

Metcalf Road is a popular location offering easy access to many of the areas popular schools, town centre and transport links. This three bedroom semi detached house is situated in a quiet cul de sac location away from the main part of the road. Upstairs, bedrooms one and two are double rooms with built in storage and bedroom three is a very usable single room perfect for a child or home office. Downstairs there is a large lounge with feature fireplace and a modern kitchen/diner. There is access onto the pretty, easy to maintain garden, which has a barbecue area and large dining area. This property also benefits from off-road parking for two cars and should be seen to be appreciated. Viewings are encouraged and can be booked by calling Aspen Residential.



Floor Plan

Metcalfe Road, Ashford



Total Area: 880 ft² ... 81.8 m²

All measurements are approximate and for display purposes only



Features

- Easy to maintain garden
- Modern Kitchen
- 3 Bedrooms
- Off Road Parking
- Beautiful Garden
- Semi Detached
- Chain complete above
- Freehold
- Popular Location
- Reduced for a quick sale

