

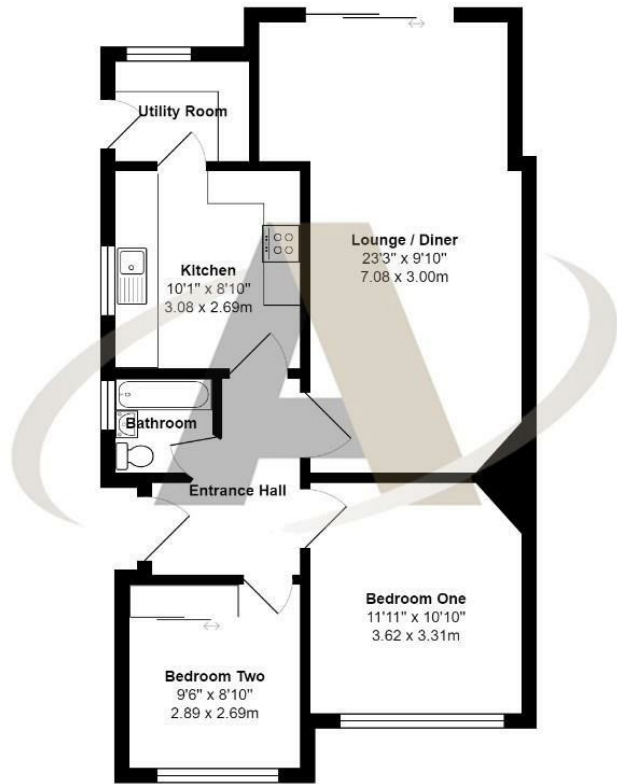


12 Rosary Gardens, Ashford, TW15 1BX

This well presented extended two bedroom semi detached bungalow is situated in a desirable cul-de-sac location. Accommodation comprises of a lounge/diner and two good sized bedrooms. Other notable features include a re-fitted kitchen, utility room, bathroom, driveway parking, garage and private rear garden backing onto allotments. The property also benefits from being within close proximity to Ashford town centre with a host of amenities. It also has good local road links to the M25 and M4. **NO ONWARD CHAIN!**



Floor Plan



Rosary Gardens, Ashford

Total Area: 734 ft² ... 68.2 m²

All measurements are approximate and for display purposes only



Features

- Two Bedrooms
- Extended
- Utility Room
- Private Rear Garden
- Garage
- Bungalow
- Re-Fitted Kitchen
- Cul-De-Sac
- Driveway Parking

