



5 Charles Court, Feltham Road, Ashford, TW15 1AD

£1,250 Per Calendar Month



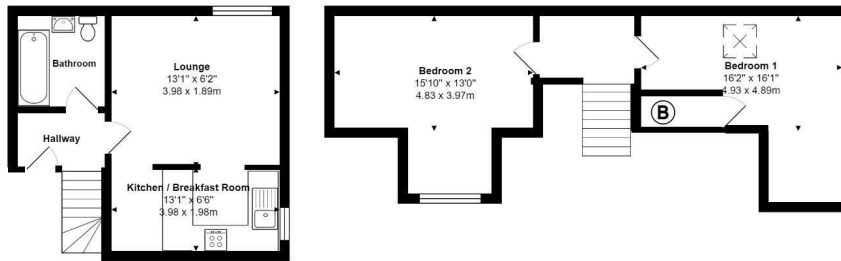
## 5 Charles Court, Feltham Road, Ashford, TW15 1AD

Available now, this larger than average first floor split level apartment has a good size lounge, open plan kitchen with breakfast bar, family bathroom bathroom, on the first floor there are two double bedrooms. Outside there are communal gardens and allocated parking. Offered part furnished, please call for further details and to arrange a viewing.



# Floor Plan

Text



## Features

- Available Now
- Apartment
- Two Double Bedrooms
- Large Lounge
- Allocated Parking
- First Floor
- Split Level
- Part Furnished
- Communal Gardens
- Call For Further Details

