



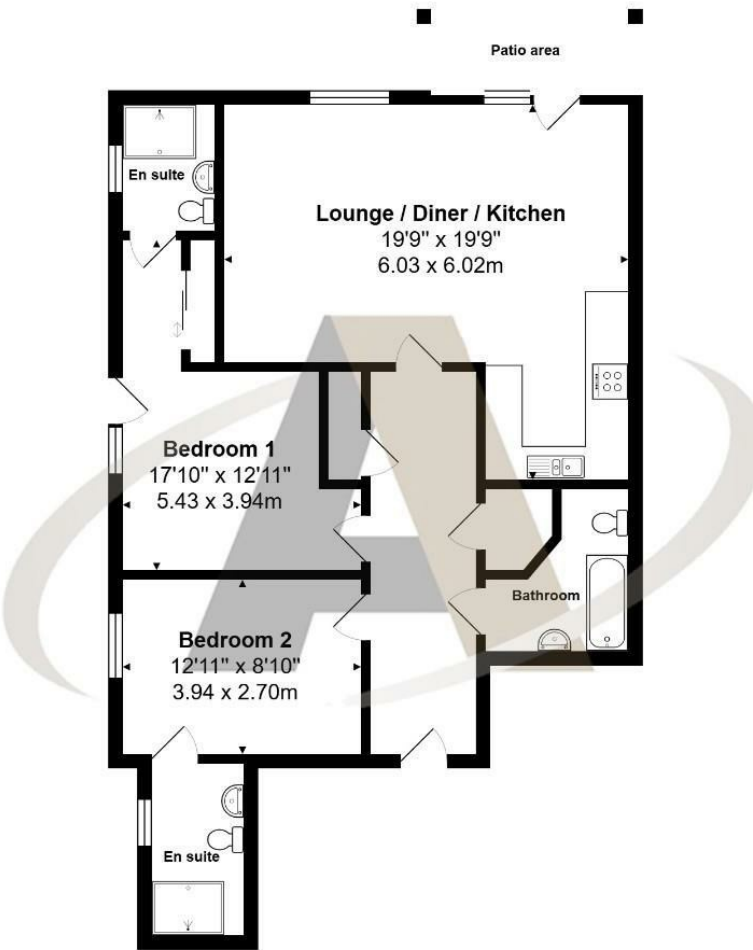
21 The Foundry Woodthorpe Road, Ashford, TW15 2AZ

Discover a modern oasis in this spacious two-bedroom, three-bathroom ground floor apartment located in The Foundry, Ashford. Designed for contemporary living, the property features a large open-plan kitchen and reception room that bathes in natural light, creating an inviting space perfect for entertaining family and friends. Each double bedroom boasts its own en suite shower room for added comfort and privacy, complemented by a separate WC for guests. Enjoy direct access to the parking area and unwind on your private outdoor terrace, ideal for relaxing or al fresco dining. Additional highlights include built-in wardrobes in the main bedroom, gas central heating, and an allocated parking space.

Situated in the highly desirable The Foundry development, this apartment offers unmatched convenience with Ashford train station just a short stroll away, providing quick and easy access to London Waterloo. Whether you're commuting or exploring the vibrant local area, this location is perfect for both city professionals and those who appreciate a tranquil lifestyle. Presented in immaculate condition, this exceptional property is a must-see for anyone looking to experience modern living at its finest. Call The Foundry's top recent sales agents, Aspen on 01784 252202.



Floor Plan



Features

- Spacious two-bedroom, three-bathroom ground floor apartment in The Foundry, Ashford.
- Each double bedroom features its own en suite shower room for ultimate comfort and privacy.
- Private outdoor terrace, ideal for relaxing or dining al fresco.
- Built-in wardrobes in the main bedroom for additional storage.
- Bright and airy open-plan kitchen and reception room, perfect for entertaining.
- Separate WC for guests, enhancing convenience for visitors.
- Direct access to the parking area with an allocated parking space.
- Prime location just a short walk from Ashford train station, providing quick access to London Waterloo.

