

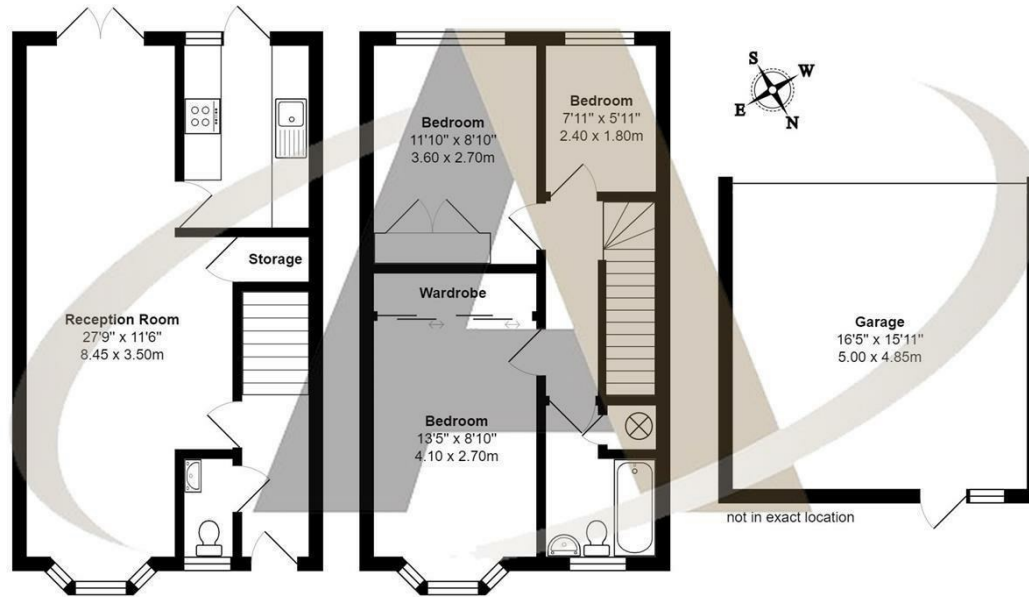


95 Shaftesbury Crescent, Staines-upon-Thames, TW18 1QN

Shaftesbury Crescent, Staines is a popular residential location offering easy access to many of the area's local amenities and popular schools. Tucked away at the bottom of a cul de sac this 3 bedroom terraced house is a must see. Upstairs there are two double bedrooms, a usable single bedroom and the family bathroom. Downstairs there is a large dual aspect living room with a bay window to the front and double doors onto the rear garden. The kitchen also has doors onto the south facing garden. This property benefits from a double garage at the bottom of the garden providing parking for at least two cars. Offered to the market with no onward chain this property is already attracting a lot of attention. Prompt viewings are encouraged and can be booked by calling Aspen Residential.



Floor Plan



Shaftesbury Crescent, Staines

Total Area: 1118 ft² ... 103.9 m²
All measurements are approximate and for display purposes only



Features

- Double Garage
- South Facing Garden
- Quiet Residential Location
- 3 Bedroom House
- No Onward Chain
- 3 Bedrooms
- Convenient for Popular Schools
- Dual Aspect Lounge

Aspen Residential Services
77 Church Road, Ashford, Surrey, TW15 2PE
Tel: 01784 252 202
Email: enquiries@aspensalesandlettings.com

