



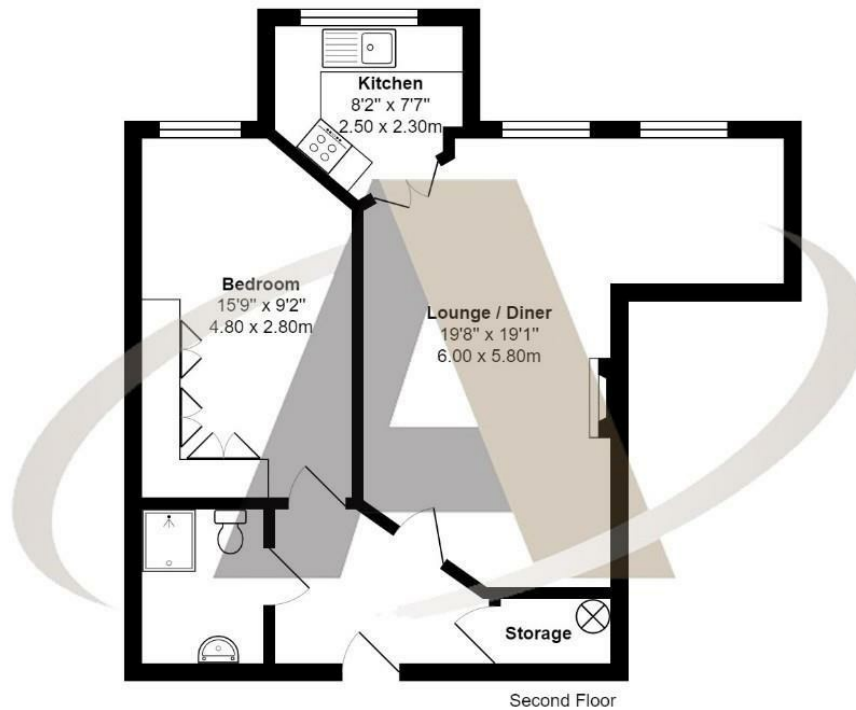


## Parkland Grove, Ashford, TW15 2GA

Larger than Average! Located in the ever popular Perrin Court, this 1 bedroom apartment is offered to the market for the first time since new. Lovingly cared for by the current owners this property comprises; large lounge with dining area, double bedroom with built in wardrobes and vanity area, well presented kitchen and shower room. Situated on the second floor, served by a lift this secure property is a must see and internal viewings are encouraged. Viewings can be booked by calling Aspen Residential.



## Floor Plan



## Perrin Court, Parkland Grove, Ashford

Total Area: 562 ft² ... 52.2 m²

All measurements are approximate and for display purposes only



## Features

- Well Presented Throughout
- Communal Lounge
- Pretty Gardens
- New Hot Water System
- Larger than Average Apartment
- Lounge with Dining Area
- 2nd Floor with a lift



**Perrin Court**

