



36 Ashford Avenue, Ashford, TW15 2BD

£385,000

36 Ashford Avenue, Ashford, TW15 2BD

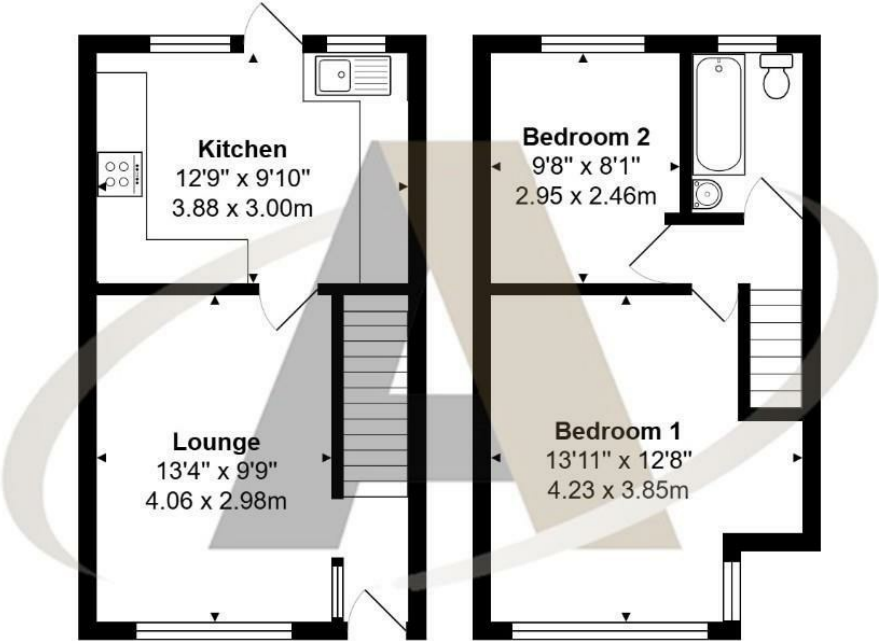
This immaculately presented two-bedroom house offers the perfect blend of modern comfort and convenience, nestled in a quiet yet highly accessible location. Just a short walk from the town centre, train station, and some of Ashford's most sought-after schools, this property is ideal for professionals, small families, or investors. The home boasts a modern, luxury fully fitted kitchen with high-end appliances and sleek finishes, providing a stylish and functional space for cooking and entertaining. Recently redecorated throughout, the interior exudes a fresh and contemporary feel, ready for immediate occupation.

The property features two generously sized bedrooms, offering ample space for relaxation and storage. A standout feature is the large rear garden, perfect for outdoor entertaining, gardening, or simply enjoying a peaceful retreat. The home combines comfort and practicality, benefiting from its prime location and thoughtfully designed living spaces. With its turn-key condition and desirable setting, this property presents a rare opportunity for buyers seeking a stylish, move-in-ready home in one of Ashford's most convenient areas. Call Alex White, and his market leading sales team at Aspen Estate Agents.



Floor Plan

36, Ashford Avenue, Ashford, TW15 2BD



Total Area: 636 ft² ... 59.0 m²

All measurements are approximate and for display purposes only



Features

- Stunning Condition
- Two Large Bedrooms
- First Floor Family Bathroom
- Quiet Residential Location
- Terraced House
- Luxury Fitted Kitchen
- Well Maintained 80ft Garden
- Close To Local Shops and Amenities

