



22 Elgin Avenue, Ashford, TW15 1QF

£475,000

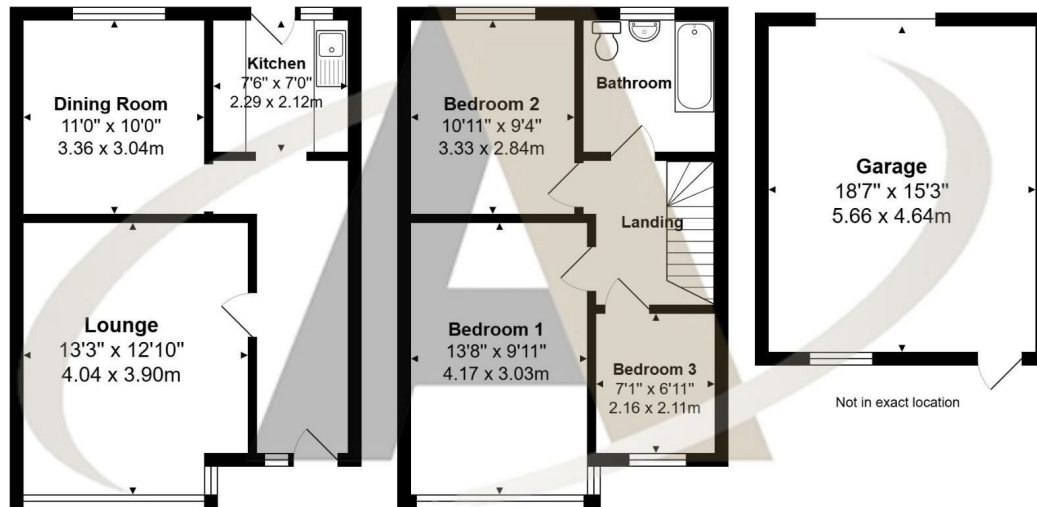
22 Elgin Avenue, Ashford, TW15 1QF

Nestled in a sought-after residential road, this charming three-bedroom house offers an ideal family home within easy reach of Ashford's top-rated schools, local shops, and beautiful recreation parks. The property welcomes you with a spacious private driveway that comfortably accommodates parking for at least three cars, ensuring ample convenience for residents and visitors alike. Inside, the home features a warm and inviting layout, providing the perfect canvas for family living.

The generous rear garden is a standout feature, offering a peaceful retreat with plenty of space for outdoor activities and entertaining. Additionally, the property boasts a double garage accessible via a convenient rear access road, adding valuable storage or workshop space. With its significant potential for expansion, including the possibility of extending to the rear and converting the loft (subject to planning permissions), this home presents an exciting opportunity to create a truly bespoke living space tailored to your needs. Don't miss your chance to secure this versatile property in a prime Ashford location by calling the vendors chosen sole agents, Aspen on 01784 252202.



Floor Plan



Features

- Three bedrooms
- Close to schools
- Potential to extend (S.T.P.P.)
- Large rear garden
- Large own driveway
- Close to shops
- Double garage
- Good location

