



19 Wolsey Road, Ashford, TW15 2RA

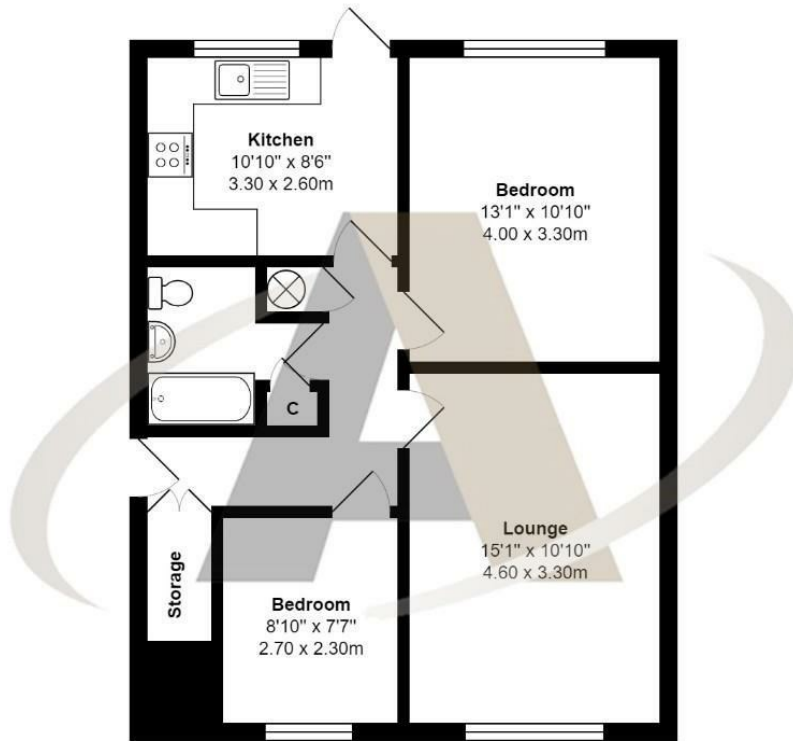
£1,250 Per Month

19 Wolsey Road, Ashford, TW15 2RA

Two bedroom maisonettes don't come better than this - in our opinion. Situated in Wolsey Road, Ashford which is convenient for many of the area's local amenities, schools, and transport links all of which are just a few moment's walk away. Accommodation comprises; two bedrooms - one double & one single, a large lounge, a modern kitchen, and a family bathroom this property is a must-see. This property also benefits from a private, pretty rear garden and an off-road parking space for a small car. Offered to the market unfurnished this property is available immediately this property is likely to attract a lot of attention and should be seen to be appreciated. Viewings can be booked by calling Aspen Estate Agents.



Floor Plan



Wolsey Road, Ashford

Total Area: 637 ft² ... 59.2 m²

All measurements are approximate and for display purposes only



Features

- Two Bedrooms
- Large Lounge
- Off Road Parking
- Well presented throughout.
- Private Garden
- Seperate Kitchen
- Available Immediately

Aspen Residential Services
77 Church Road, Ashford, Surrey, TW15 2PE
Tel: 01784 252 202
Email: enquiries@aspensalesandlettings.com



Tenure - Council Tax Band - C

