



4 Heathcroft Avenue, Sunbury-On-Thames, TW16 7TL

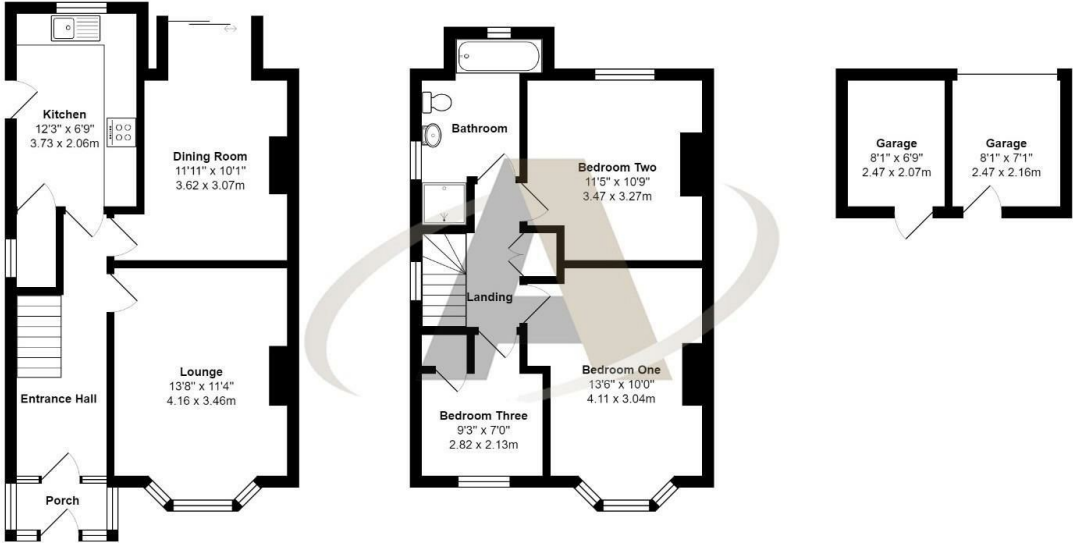
£2,100 Per Month

4 Heathcroft Avenue, Sunbury-On-Thames, TW16 7TL

This three bedroom semi detached house is situated moments from Sunbury cross with a host of local amenities and within walking distance to Sunbury railway station. Accommodation comprises of lounge, dining room and three bedrooms. Other notable features include four piece bathroom suite, gas central heating, driveway parking, kitchen, garage/outbuilding and a private enclosed rear garden. The property also benefits from being within catchment to some of the most popular local schools and has superb access to the M3.



Floor Plan



Heathcroft Avenue, Sunbury-on-thames, TW16 7TL

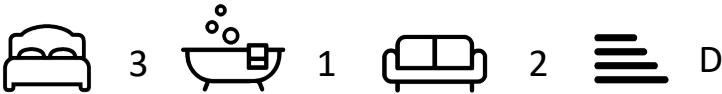
Total Area: 1163 ft² ... 108.0 m²
All measurements are approximate and for display purposes only



Features

- Three Bedrooms
- Dining Room
- Driveway Parking
- Private Rear Garden
- Lounge
- Four Piece Bathroom Suite
- Garage/Outbuilding

Aspen Residential Services
77 Church Road, Ashford, Surrey, TW15 2PE
Tel: 01784 252 202
Email: enquiries@aspensalesandlettings.com



Tenure - Council Tax Band - D

