



17 Bridge Gardens, Ashford, TW15 1UR

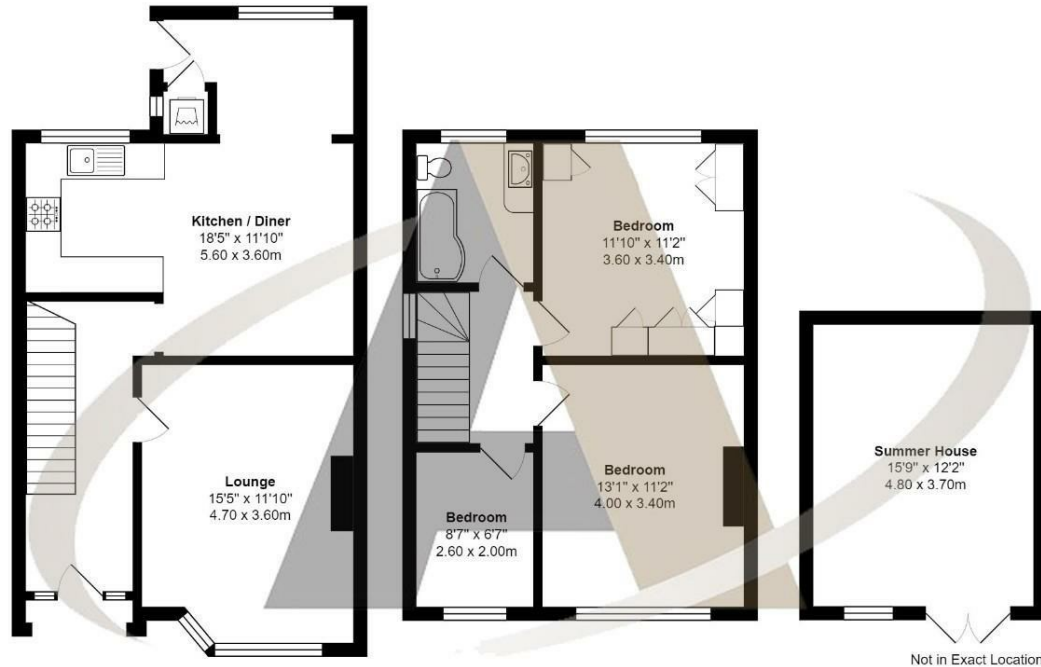
£495,000

## 17 Bridge Gardens, Ashford, TW15 1UR

Aspen Residential are delighted to introduce this lovely 3 bedroom property in a popular residential location. Bridge Gardens, Ashford is conveniently located offering easy access to transport links, schools and local amenities. Upstairs there are three bedrooms. Bedrooms one and two are comfortable double rooms and the third bedroom is a very useable single bedroom. Downstairs there is a large reception room to the front and a kitchen/diner to the rear. The kitchen has ample worktop space and plenty of eye and base-level storage cupboards. Outside there is a large, low maintenance garden, a large summer house with power and off road parking to the front. This property is offered for sale with no onward chain and should be seen to be appreciated.



# Floor Plan



## Bridge Gardens, Ashford

Total Area: 1244 ft<sup>2</sup> ... 115.5 m<sup>2</sup>  
 All measurements are approximate and for display purposes only



### Features

- 3 Bedrooms
- Kitchen / Diner
- Off Road Parking
- Convenient for Transport
- Large Lounge
- Large, Low Maintenance Garden
- Summer House
- No Onward Chain

Aspen Residential Services  
 77 Church Road, Ashford, Surrey, TW15 2PE  
 Tel: 01784 252 202  
 Email: enquiries@aspensalesandlettings.com



