



Flat 15, Grange Court Gresham Road, Staines-upon-Thames, TW18 2BT

£1,000 Per Month

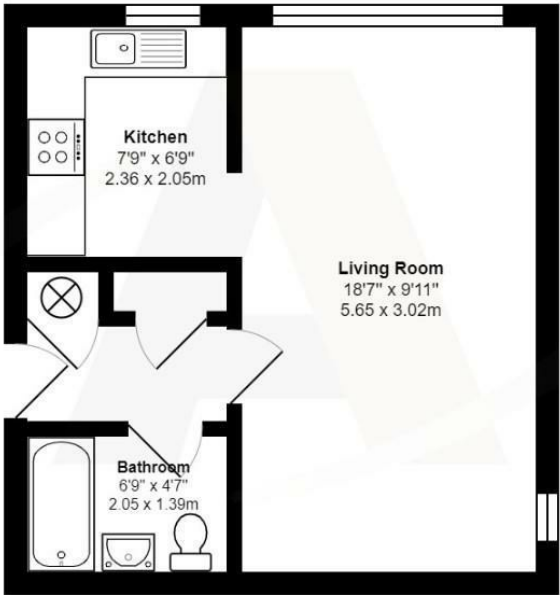


# Flat 15, Grange Court Gresham Road, Staines-upon-Thames, TW18 2BT

For Single Occupancy Only, this larger than average Ground Floor Studio Apartment is ideally located for Staines Train Station and within a short walk of Staines Town Centre, with local shops, the River Thames, and sports/recreational facilities nearby. This apartment has just been renovated by the landlord and has been fully redecorated, with new double glazing throughout, a new heating system, new carpets/flooring, and kitchen appliances. Accommodation comprises a large living space with ample room to separate living and sleeping areas, separate fitted kitchen with white goods, full-sized bathroom with shower over bath, built-in wardrobe, secure entry system, communal gardens, and allocated parking. This property is offered furnished and is likely to attract a lot of attention and prompt viewings are encouraged.



Floor Plan



Grange Court, Gresham Road, Staines

All measurements are approximate and for display purposes only

Features

- Allocated Parking
- Separate Kitchen With New Appliances
- Security Entry Phone
- Early Viewing Highly Recommended
- Larger than Average Studio Apartment
- Ground Floor
- New Glazing and Carpets
- Furnished
- Single Occupancy Only
- Redecorated Throughout



