



111 Shaftesbury Crescent, Staines-Upon-Thames, TW18 1QN

£430,000

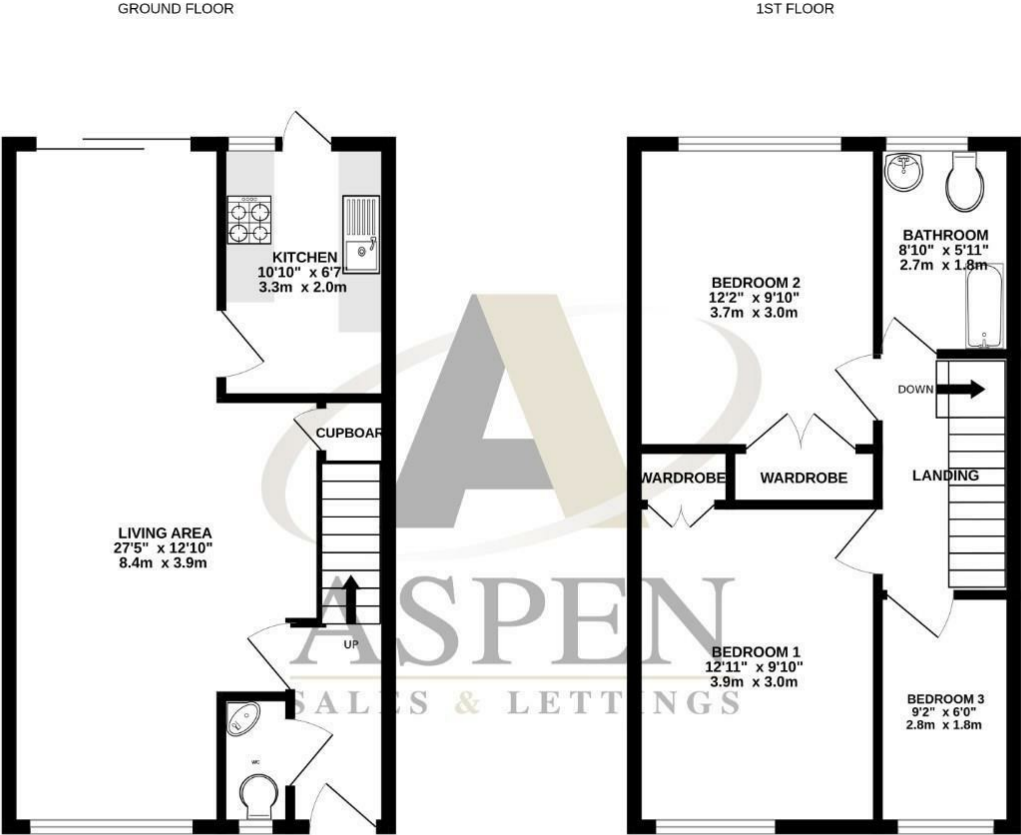
111 Shaftesbury Crescent, Staines-Upon-Thames, TW18 1QN

Offered with no onward chain, this beautifully presented three-bedroom Neo-Georgian style mews house is nestled in a quiet, tree-lined crescent in the heart of picturesque Laleham Village. Offering charm and character in a sought-after setting, the property features a bright and welcoming living space, complemented by a modern, recently fitted patio door that opens onto a well-kept rear garden—perfect for relaxing or entertaining. A convenient downstairs W.C. and new front door further enhance the appeal, ensuring both comfort and practicality for everyday living.

Upstairs, there are three generous-sized bedrooms providing ample space for family living or guests, along with the flexibility to create a home office if desired. The property also benefits from a garage located in a nearby block, offering valuable additional storage or parking. Sold with vacant possession and very sensibly priced for an early sale, this delightful home presents an excellent opportunity to purchase a stylish and well-maintained property in one of Laleham's most attractive residential locations. Call Alex White and his market leading sales team at Aspen estate agents.



Floor Plan



Whilst every attempt has been made to ensure the accuracy of the floorplan contained here, measurements of doors, windows, rooms and any other items are approximate and no responsibility is taken for any error, omission or mis-statement. This plan is for illustrative purposes only and should be used as such by any prospective purchaser. The services, systems and appliances shown have not been tested and no guarantee as to their operability or efficiency can be given.
Made with Metropix ©2025



Features

- Attractive Neo-Georgian style mews house in a quiet, tree-lined crescent
- Bright and welcoming living space with modern décor
- Convenient downstairs W.C. and new front door
- Garage located in a nearby block providing parking or storage
- Located in the picturesque and sought-after Laleham Village
- Recently fitted patio door leading to a well-kept rear garden
- Three generous-sized bedrooms offering flexibility for family or home office use
- Sold with vacant possession and sensibly priced for an early sale



Tenure - Freehold Council Tax Band - D

