



13 Gogmore Farm Close, Chertsey, KT16 9HE

£425,000

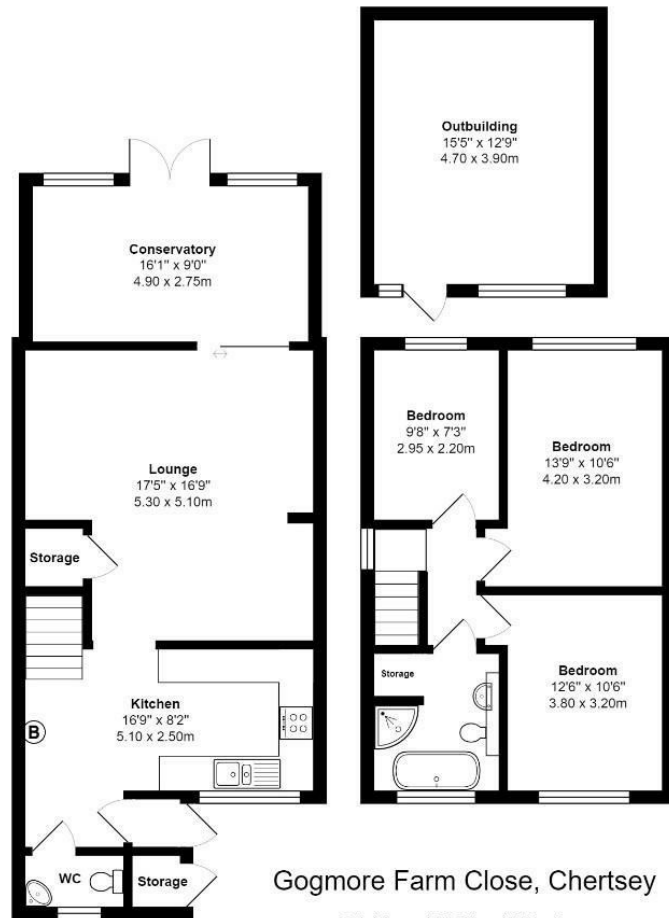


## 13 Gogmore Farm Close, Chertsey, KT16 9HE

Gogmore Farm Close is a very popular, residential location offering easy access to Chertsey Town Centre, Station, local parks, and some of the area's most popular primary schools. This property has been extended by the current owners and the current accommodation comprises; three bedrooms all of which have space for a double bed and additional storage, the family bathroom has a modern bathroom suite, free-standing roll-top bath, and separate shower cubicle. Downstairs there is a beautiful kitchen which has ample quartz worktop space, plenty of base, and eye-level storage cupboards and space for appliances. The lounge is a good size and has doors opening up to the conservatory which offers an extra reception room that has been used as a dining room in the past. Outside this property has a low maintenance garden and an outbuilding with electricity which has most recently been used as a bar/games room but would make an excellent home office/study. This property is offered to the market with no onward chain and should be seen to be appreciated. Viewings can be booked by calling Aspen Estate Agents.



# Floor Plan



Gogmore Farm Close, Chertsey

Total Area: 1267 ft<sup>2</sup> ... 117.7 m<sup>2</sup>  
 All measurements are approximate and for display purposes only



## Features

- End Of Terrace
- Large Reception Room
- Beautiful Kitchen
- Downstairs WC
- 3 Double Bedrooms
- Modern Bathroom
- No Onward Chain
- Outbuilding with Power

Aspen Residential Services  
 77 Church Road, Ashford, Surrey, TW15 2PE  
 Tel: 01784 252 202  
 Email: enquiries@aspensalesandlettings.com





