



Cranstone Mayfield Avenue, Addlestone, KT15 3AG

£2,000 Per Calendar Month

Cranstone Mayfield Avenue, Addlestone, KT15 3AG

Cranstone is a superb 3 bedroom detached house in the ever-popular Mayfield Avenue, New-Haw. This property has been redecorated by the landlords and is available from the 1st June on an unfurnished basis. Downstairs there is a lovely bay-windowed lounge to the front of the property with parquet flooring and a larger kitchen diner to the rear. The kitchen is modern with plenty of storage cupboards and worktop space. There are double doors leading out onto the garden. Upstairs there are three bedrooms. The primary bedroom is a larger than average double room, bedroom two is a comfortable double room and the third bedroom is a very useable single room and would be a good home office. The family bathroom is also a good size with a modern, white, 3-piece bathroom suite with a shower over the bath. Outside this property has a large garden to the rear and off-road parking for several cars to the front. This property is likely to attract a lot of attention. Viewings are encouraged and can be booked by calling Aspen Estate Agents.



Floor Plan

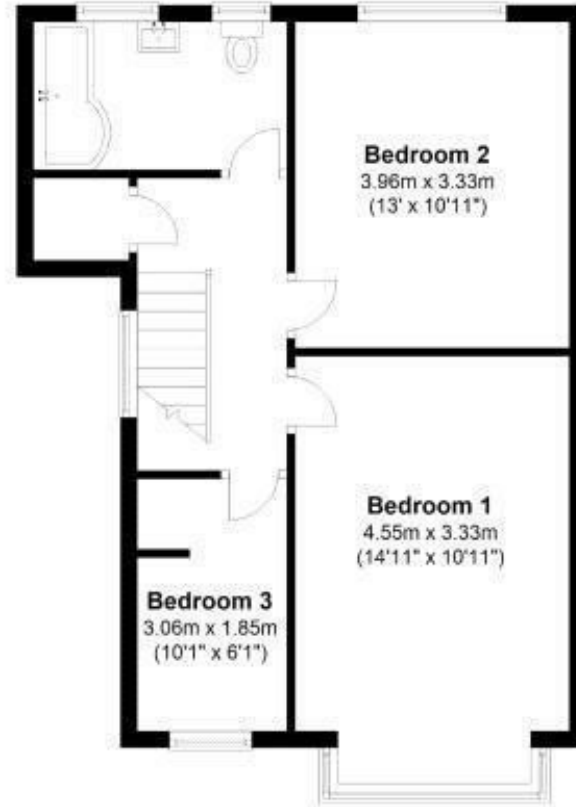
Ground Floor

Approx. 47.4 sq. metres (509.9 sq. feet)



First Floor

Approx. 49.6 sq. metres (534.0 sq. feet)



Total area: approx. 97.0 sq. metres (1043.9 sq. feet)



Features

- Detached House
- Large Lounge
- Big Garden
- Popular Residential Location
- Available 1st June
- 3 Bedrooms
- Kitchen / Diner
- Off Road Parking
- Unfurnished

