



10 Princes Road, Ashford, TW15 2LT

£700,000

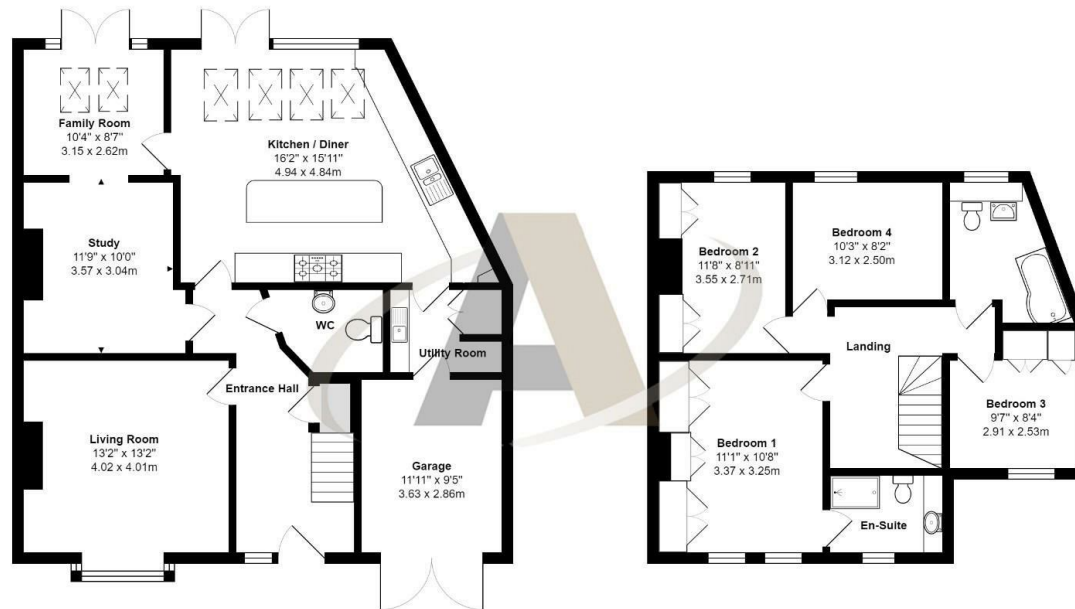


## 10 Princes Road, Ashford, TW15 2LT

This stunning four bedroom house has been updated and extended over a number of years by the current owners but still retains its true character. Accommodation comprises of four double bedrooms, living room, family room, study and a large kitchen/diner. Other notable features include a re-fitted kitchen with island, utility room, w c, re-fitted en-suite with walk in shower, re-fitted family bathroom, double glazing, gas central, feature fireplaces, garage and a large private enclosed rear garden. The property benefits from with walking distance to Ashford town centre and railway station. It also has superb road links to the M25, M3, M4, giving great access to Heathrow Airport.



## Floor Plan



Princes Road, Ashford, TW15 2LT

Total Area: 1707 ft² ... 158.5 m²

All measurements are approximate and for display purposes only



## Features

- Four Double Bedrooms
- Large Re-Fitted Kitchen/Diner
- Re-Fitted En-Suite
- Re-Fitted Family Bathroom
- Three Reception Rooms
- Garage
- Utility Room
- Large Private Rear Garden

Aspen Residential Services  
77 Church Road, Ashford, Surrey, TW15 2PE  
Tel: 01784 252 202  
Email: [enquiries@aspensalesandlettings.com](mailto:enquiries@aspensalesandlettings.com)

