



4 Imperial Road, Feltham, TW14 8AG

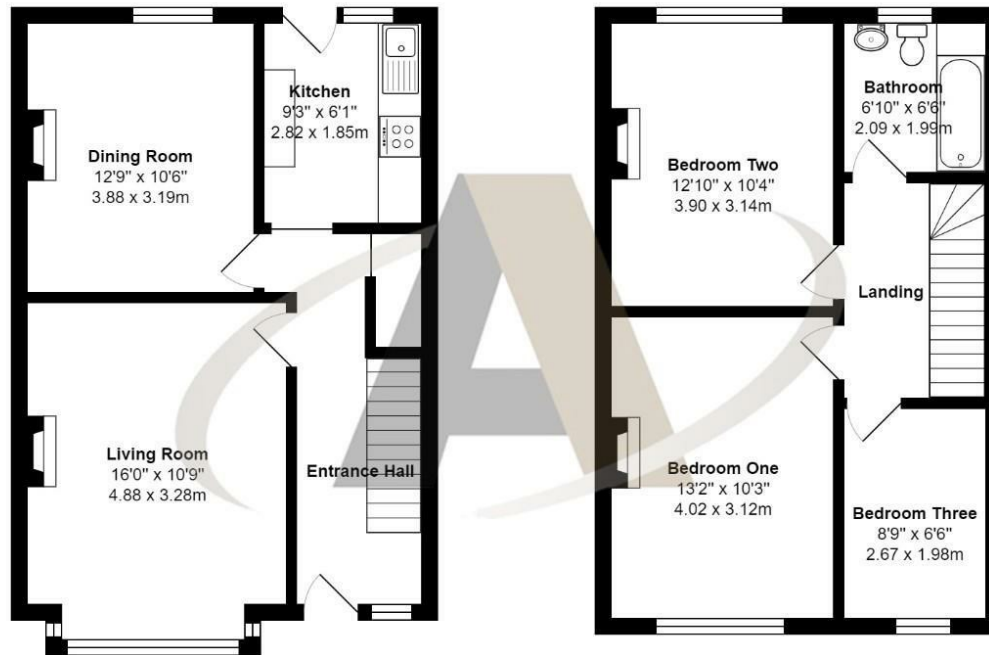
£425,000

4 Imperial Road, Feltham, TW14 8AG

This three bedroom terraced home is ideally located moments from Bedfont high street. Accommodation comprises of living room, dining room and three bedrooms. Other notable features include re-fitted kitchen, gas central heating, bathroom, double glazing and large enclosed private rear garden. The property also benefits from having superb road links to the M25, M4 and M3. It also falls within catchment to some of the most popular local schools. NO ONWARD CHAIN.



Floor Plan



Imperial Road, Feltham, TW14 8AG

Total Area: 988 ft² ... 91.8 m²

All measurements are approximate and for display purposes only



Features

- Three Bedrooms
- Re-Fitted Kitchen
- Gas Central Heating
- Large Private Rear Garden
- Two Reception Rooms
- Double Glazed
- Walking Distance To Local Amenities
- No Onward Chain

