

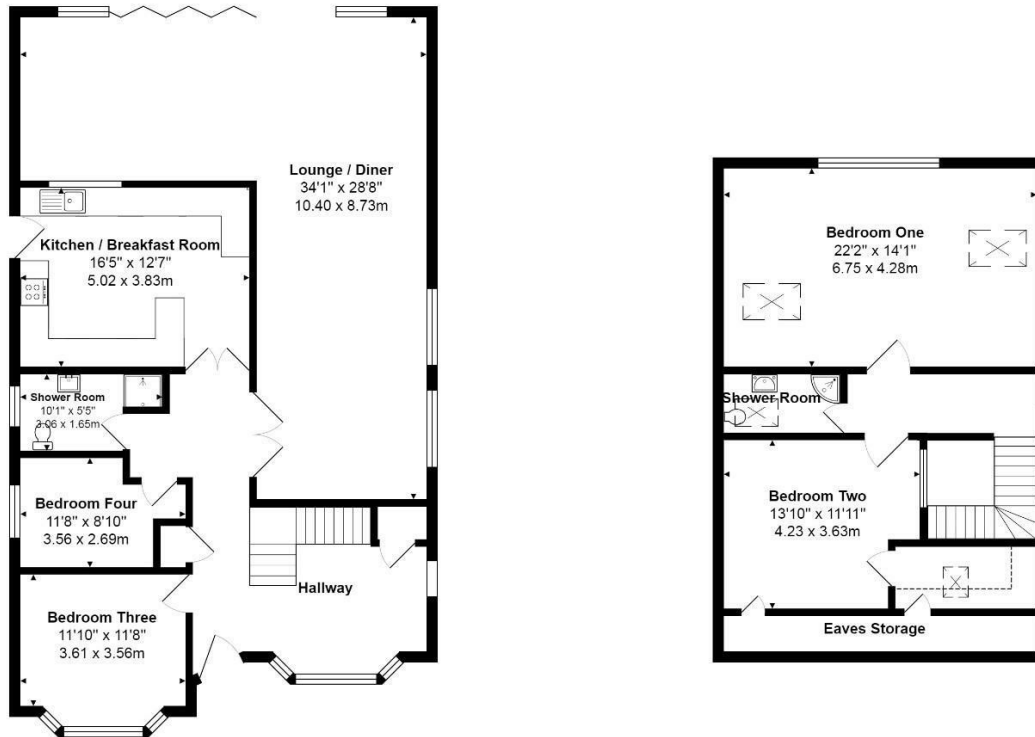


43 Ashford Road
Ashford TW15 1UE
£650,000



- Four bedrooms
- Inviting hallway
- Landscaped rear garden
- Luxury kitchen/breakfast room
- Stunning detached bungalow
- Two shower rooms
- 38ft lounge/diner
- Full width bi fold doors
- Modern grey theme throughout
- Invitiing entrance hall

Floor Plan



All measurements are approximate and for display purposes only

Area Map



Energy Efficiency Graph

