



10 Mornington Road, Ashford, TW15 1NW

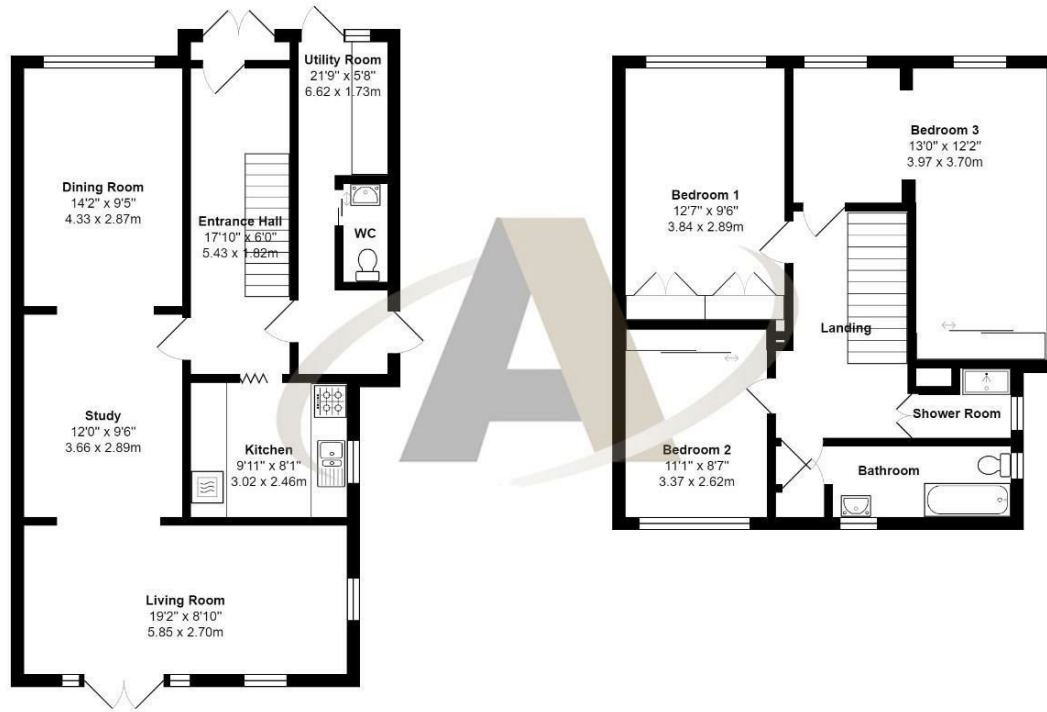
£550,000

10 Mornington Road, Ashford, TW15 1NW

This extended three double bedroom semi detached home is located in popular residential location. Accommodation comprises of living room, study, dining room and three double bedrooms with built in wardrobes. Other notable features include re-fitted kitchen, utility room, cloakroom, re-fitted bathroom, shower room, driveway parking, garage/workshop and large enclosed rear garden. The property also benefits from being within catchment to a number of local schools and has good local road links to the M25 & M3.



Floor Plan



Mornington Road, Ashford, TW15 1NW

Total Area: 1414 ft² ... 131.4 m²

All measurements are approximate and for display purposes only



Features

- Three Double Bedrooms
- Dining Room
- Re-Fitted Kitchen
- Re-Fitted Bathroom
- Driveway
- Living Room
- Study
- Utility Room
- Large Private Rear Garden
- Garage/workshop

