



68 Fordbridge Road, Ashford, TW15 2SP

£1,375,000

68 Fordbridge Road, Ashford, TW15 2SP

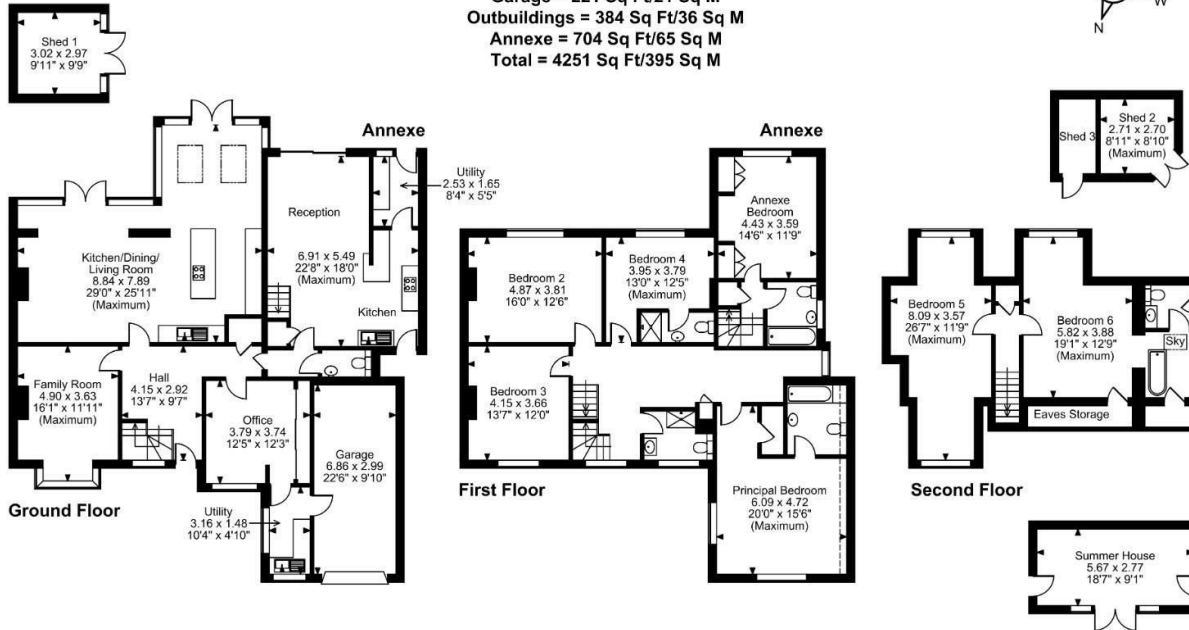
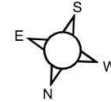
An attractive and immaculately presented seven-bedroom, five-bathroom family home offering substantial and versatile accommodation, including a superb 700 sq ft self-contained one-bedroom annex arranged over two floors. The annex benefits from its own private front door, utility room, modern upstairs bathroom, and an impressive 22ft kitchen/lounge with patio doors opening onto its own decked area overlooking the garden — ideal for multi-generational living, guests, or home-and-income potential. The main house further provides a well-proportioned reception rooms, impressive kitchen/dining/living room overlooking garden, office, downstairs W.C., separate utility room, and a generous 22ft garage, all presented in excellent decorative order throughout.

Externally, the property enjoys a particularly large rear garden backing onto Ashford Manor Golf Course, creating a wonderful sense of space and privacy. The garden features a heated swimming pool and contemporary summer house, perfect for entertaining or relaxing in the warmer months. To the front, a spacious driveway provides ample off-street parking for multiple vehicles. A truly impressive and unique home offering exceptional flexibility and lifestyle appeal — early internal viewing is highly recommended. Call Alex White and his market leading sales team at Aspen estate agents.



Floor Plan

Fordbridge Road, Ashford
Approximate Gross Internal Area
Main House = 2942 Sq Ft/273 Sq M
Garage = 221 Sq Ft/21 Sq M
Outbuildings = 384 Sq Ft/36 Sq M
Annexe = 704 Sq Ft/65 Sq M
Total = 4251 Sq Ft/395 Sq M

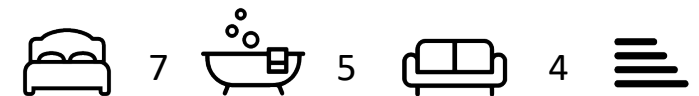


Features

- Immaculately presented seven-bedroom, five-bathroom detached family home
- Annex with private entrance, utility room, bathroom and 22ft kitchen/lounge with garden access
- Spacious and versatile main accommodation in excellent decorative order
- Generous 22ft garage and large driveway with parking for multiple vehicles
- Heated swimming pool and contemporary summer house ideal for entertaining
- Superb 700 sq ft self-contained one-bedroom annex over two floors
- Ideal for multi-generational living, guests or home-and-income potential
- Well-proportioned home office plus separate utility room
- Exceptionally large rear garden backing onto Ashford Manor Golf Course
- Unique, high-quality home offering outstanding lifestyle appeal

FOR ILLUSTRATIVE PURPOSES ONLY - NOT TO SCALE
 The position & size of doors, windows, appliances and other features are approximate only.
 □ □ □ □ Denotes restricted head height
 © ehouse. Unauthorised reproduction prohibited. Drawing ref. dig/8680036/NJD

Aspen Residential Services
 77 Church Road, Ashford, Surrey, TW15 2PE
 Tel: 01784 252 202
 Email: enquiries@aspensalesandlettings.com



Tenure - Freehold Council Tax Band - G

