



14 Kenilworth Road, Ashford, TW15 3EL

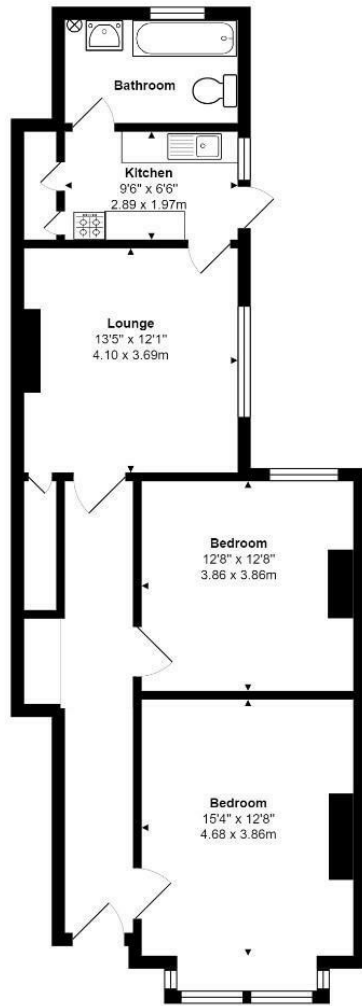
£1,250 Per Month

14 Kenilworth Road, Ashford, TW15 3EL

Available now, this larger than average ground floor maisonette has been redecorated throughout and new carpets laid. The property has two double bedrooms, large lounge, walk in cupboard, gas central heating, family bathroom, kitchen with direct access to a patio and rear garden and there is off street parking for one car. Offered unfurnished, please call for further details and to arrange a viewing.



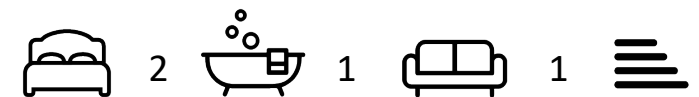
Floor Plan



Features

- Available Now
- Two Double Bedrooms
- New Carpets
- Patio & Garden
- Unfurnished
- Redecorated Throughout
- Large Lounge
- Ground Floor
- Off Street Parking
- Early Viewing Recommended

Aspen Residential Services
77 Church Road, Ashford, Surrey, TW15 2PE
Tel: 01784 252 202
Email: enquiries@aspensalesandlettings.com



Tenure - Council Tax Band -

