



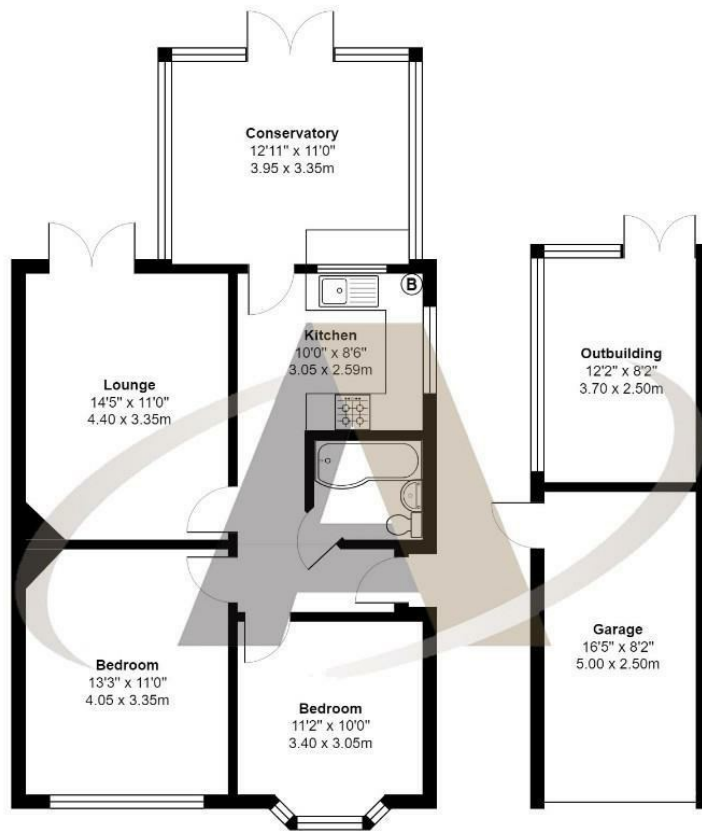
9 Rosary Gardens
Ashford TW15 1BX
£450,000

9 Rosary Gardens, Ashford, TW15 1BX

A rare opportunity to purchase a beautifully presented two bedroom bungalow in a popular residential location. Rosary Gardens is a pretty cul-de-sac offering easy access to many of the areas popular schools, park, town centre and transport links all of which are just a short walk away. On entering this property it is immediately obvious that this home has been well cared for over many years by the current owners. Current accommodation comprises; two double bedrooms with ample space for storage, a large lounge with doors opening onto the garden, family bathroom with modern 3 piece suite with shower over the bath, separate kitchen with lots of storage, worktop space, integrated appliances & gas hob. The current owners have added a conservatory - used as a dining room which has doors opening onto the stunning rear garden. The garden is mainly laid to lawn but has a large patio area and an outbuilding used as an office and there is a single garage. Other notable features of this property include; a recently replaced gas boiler, double glazing, scope to extend (stpp) and off-road parking. This property is already attracting a lot of attention and prompt viewings are encouraged, Viewings can be booked by calling Aspen Residential.



Floor Plan



Rosary Gardens, Ashford

Total Area: 992 ft² ... 92.1 m²

All measurements are approximate and for display purposes only

Area Map



Features

- Beautifully Presented Bungalow
- Conservatory
- Garage
- 2 Bedrooms
- Pretty Gardens
- Outbuilding used as an office

Aspen Residential Services
77 Church Road, Ashford, Surrey, TW15 2PE
Tel: 01784 252 202
Email: enquiries@aspensalesandlettings.com

