



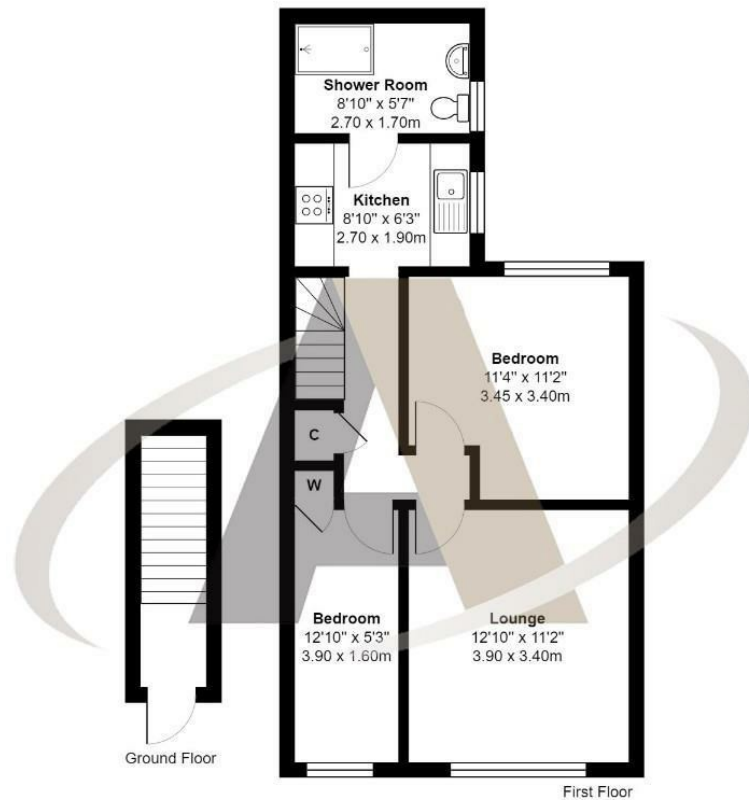
119a Feltham Hill Road
Ashford TW15 1HE
£250,000

119a Feltham Hill Road, Ashford, TW15 1HE

A delightful and well presented two bedroom apartment conveniently located for most of the areas local amenities, transport links and local schools. Accommodation comprises; two bedrooms, a modern kitchen, luxury shower room and large lounge. Other notable features include gas central heating, under floor heating in kitchen and shower room, a long lease, no service charges and an allocated parking space. Offered to the market with no onward chain this property should be seen to be appreciated and viewings can be booked by calling Aspen Residential.



Floor Plan



Feltham Hill Road, Ashford

Total Area: 573 ft² ... 53.3 m²

All measurements are approximate and for display purposes only

Area Map



Features

- Allocated Parking
- Long Lease
- No Service Charges
- Two Bedroom Apartment
- No Onward Chain
- Well Presented Throughout
- Convenient for Schools, Transport and Amenities
- Modern Kitchen & Shower Room

