



17a Stanwell Road, Ashford, TW15 3EH

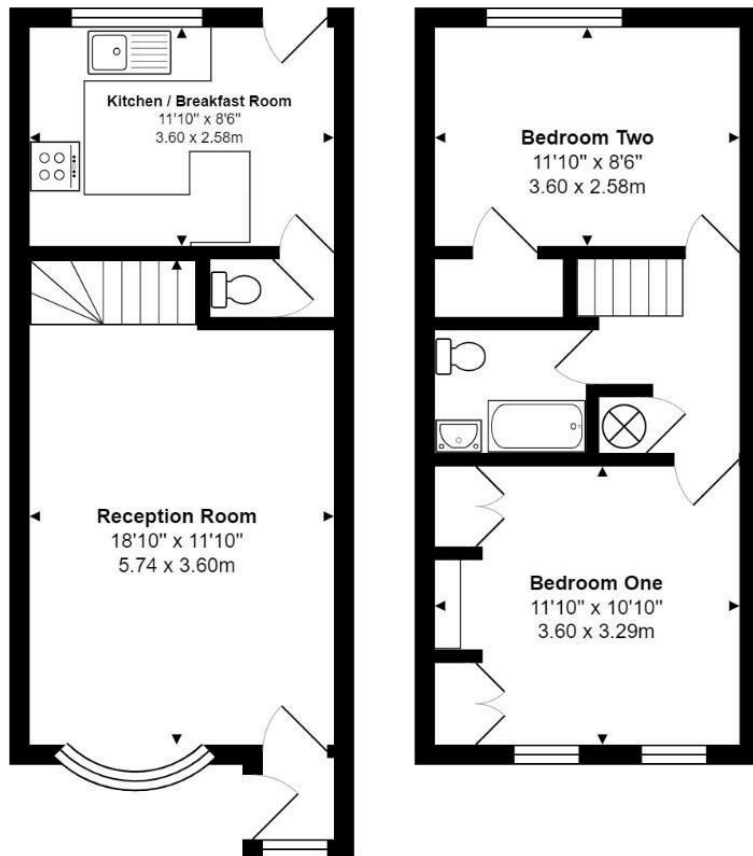
£1,275 Per Month

17a Stanwell Road, Ashford, TW15 3EH

Available mid March, this end of terrace house has two double bedrooms and benefits from a spacious living room, useful ground floor cloakroom, family bathroom and a refitted kitchen/breakfast room. There is a good size garden with rear access and off street parking. Ideally situated and within easy reach of Ashford town centre and Ashford Station, offered unfurnished, please call for further details and to arrange a viewing.



Floor Plan



Features

- Two double bedrooms
- Modern bathroom
- Easy access to station
- Spacious living room
- Garden with rear access
- Ground floor cloakroom
- Refitted kitchen/breakfast room
- Easy access to Ashford
- Available mid March
- Off street parking

