



TWELVE Greenacre Court, Englefield Green, TW20 0RF

£265,000



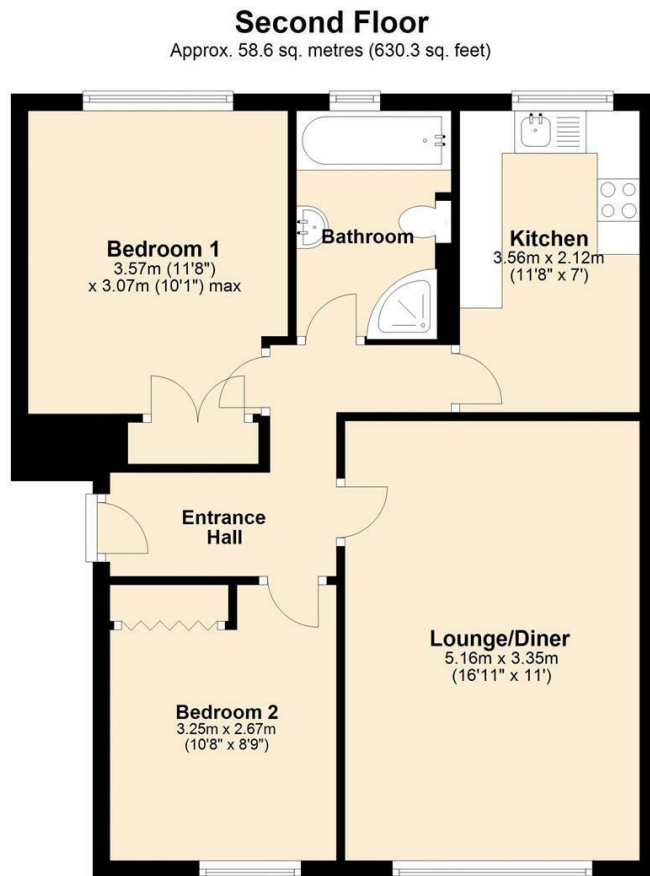
# TWELVE Greenacre Court, Englefield Green, TW20 0RF

## INVESTMENT BUYERS ONLY

A very well presented two bedroom property for an investment buyer only, with the property rented out until 18th August 2023 to students from Royal Holloway University. The property is located on the top floor with bright spacious accommodation in the heart of Englefield Green, just a few minutes' walk from the village green, university and village shops. The property comprises a large living/dining room, bathroom, kitchen and two double bedrooms and a garage. Approx. 112 years remaining on the lease - Energy Rating C.



# Floor Plan



## Features

- Two Double Bedrooms
- Central Location
- 112 Year Lease
- Good Sized Lounge
- Great Investment

Aspen Residential Services  
77 Church Road, Ashford, Surrey, TW15 2PE  
Tel: 01784 252 202  
Email: [enquiries@aspensalesandlettings.com](mailto:enquiries@aspensalesandlettings.com)





