



13 Gabriel Close, Feltham, TW13 6YE

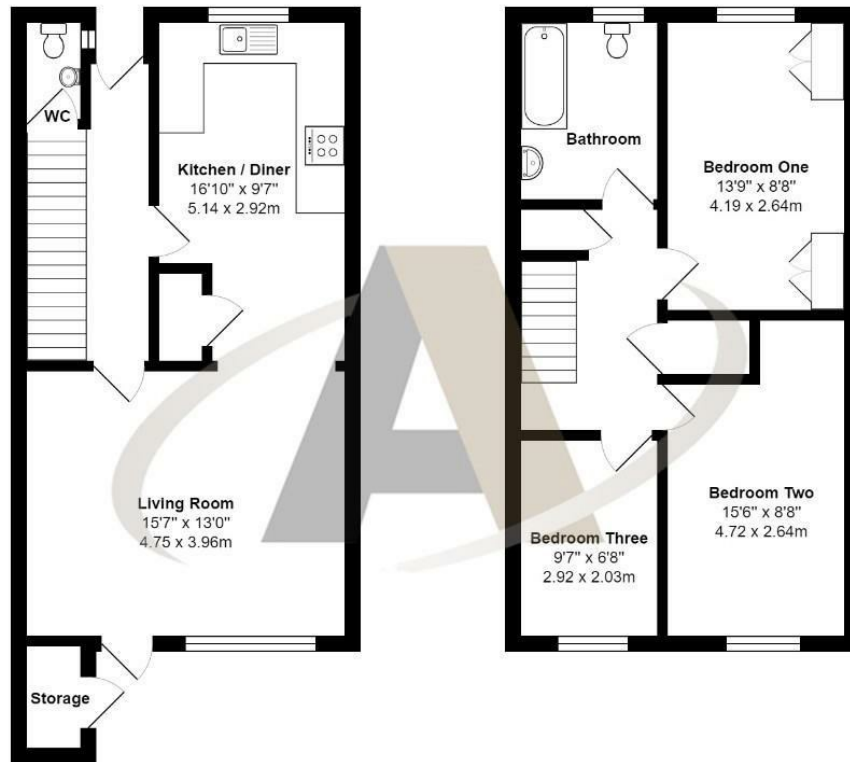
£365,000

13 Gabriel Close, Feltham, TW13 6YE

This three bedroom terrace house is situated in a cul-de-sac location with a small green to the front of the property. Accommodation comprises of living room, dining area and three bedrooms. Other notable features include re-fitted kitchen/diner, cloakroom, double glazing, re-fitted bathroom, ample storage and a private enclosed rear garden. The property also benefits from good local road links to the M3 and M25 offering great access to Heathrow Airport.



Floor Plan



Gabriel Close, Feltham, TW13 6YE

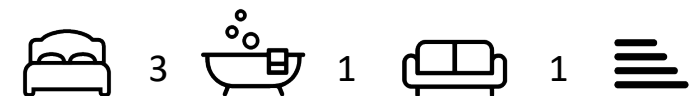
Total Area: 955 ft² ... 88.7 m²

All measurements are approximate and for display purposes only



Features

- Three Bedrooms
- Re-Fitted Kitchen/Diner
- Cloakroom
- Private Enclosed Rear Garden
- Living Room
- Double Glazing
- Re-Fitted Bathroom





A
ASPEN
SALES & LETTINGS