



41 Celia Crescent, Ashford, TW15 3NP

£525,000



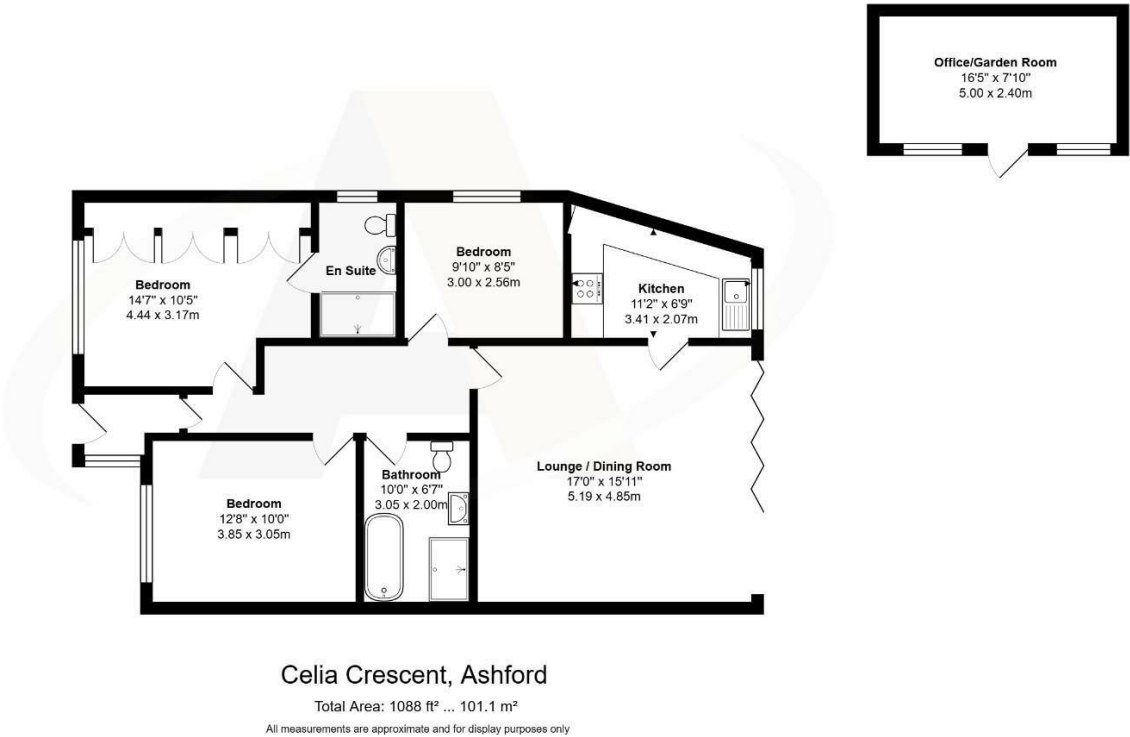
## 41 Celia Crescent, Ashford, TW15 3NP

This very well presented and recently refurbished three double bedroom, two bathroom extended semi-detached bungalow is perfectly positioned in a quiet cul-de-sac, backing directly onto the picturesque Fordbridge Park. The property offers excellent curb appeal with off-street parking and a welcoming entrance porch leading into a spacious and tastefully decorated living room. Designed for modern living, the home features stylish bi-folding doors that open seamlessly to the rear garden, allowing natural light to flood the space and creating an ideal setting for both relaxation and entertaining.

The accommodation includes a large, contemporary four-piece family bathroom and an en-suite shower room to the main bedroom, providing comfort and convenience for the whole family. The rear garden is a true highlight, very well maintained and featuring a covered patio area perfect for year-round outdoor enjoyment. There is also a recently constructed brick-built office or garden room, complete with power and lighting — ideal for home working or as a creative studio. With its tranquil location, thoughtful layout, and high-quality finish throughout, this property offers an exceptional blend of comfort, style, and practicality. Call Alex White and his market leading sales team at Aspen estate agents.



Floor Plan



Features

- Recently refurbished semi-detached bungalow in a quiet cul-de-sac location
- Overlooks the picturesque Fordbridge Park, offering a peaceful and scenic backdrop
- Bright and spacious living room with stylish bi-folding doors opening to the rear garden
- Well-maintained rear garden with a covered patio area ideal for year-round entertaining
- Three double bedrooms and two modern bathrooms
- Off-street parking and a welcoming entrance porch providing great curb appeal
- Large contemporary four-piece family bathroom finished to a high standard
- Recently constructed brick-built office/garden room with power and lighting



