



45 Conway Drive, Ashford, TW15 1RG

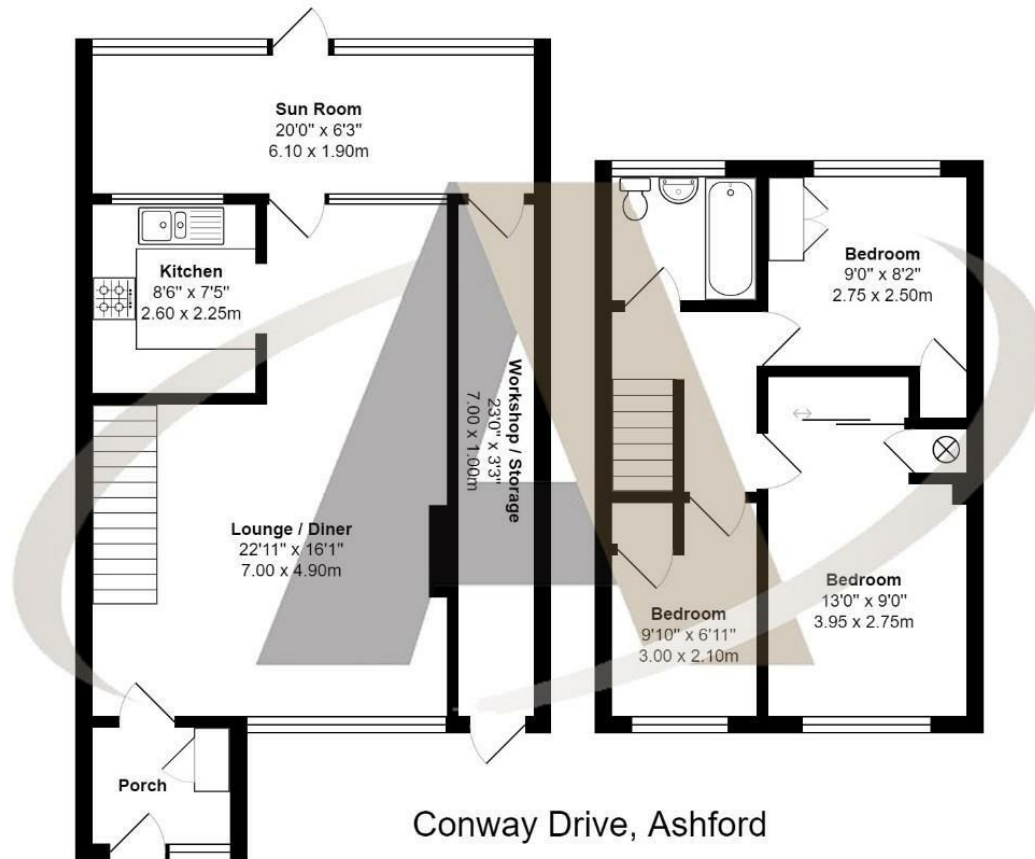
£435,000

45 Conway Drive, Ashford, TW15 1RG

Situated in a quiet position of the ever popular Conway Drive, Ashford we are delighted to introduce this three bedroom end of terrace house. In need of modernisation throughout this property presents a fantastic opportunity for the next owners to make it their home. Accommodation comprises three bedrooms and a bathroom upstairs and a large lounge/diner, separate kitchen and a sun room downstairs. The current owners have created a covered storage area which was used as a workshop. Outside this property has front & rear gardens, off road parking and a garage in the block. Offered to the market with no onward chain this property should be seen to be appreciated and viewings can be booked by calling Aspen Residential.



Floor Plan



Total Area: 948 ft² ... 88.1 m² (excluding workshop / storage)

All measurements are approximate and for display purposes only



Features

- 3 Bedrooms
- Large Lounge / Diner
- Separate Kitchen
- Sun Room
- Garage in the block
- Off Road Parking
- In need of modernisation
- No Onward Chain

