



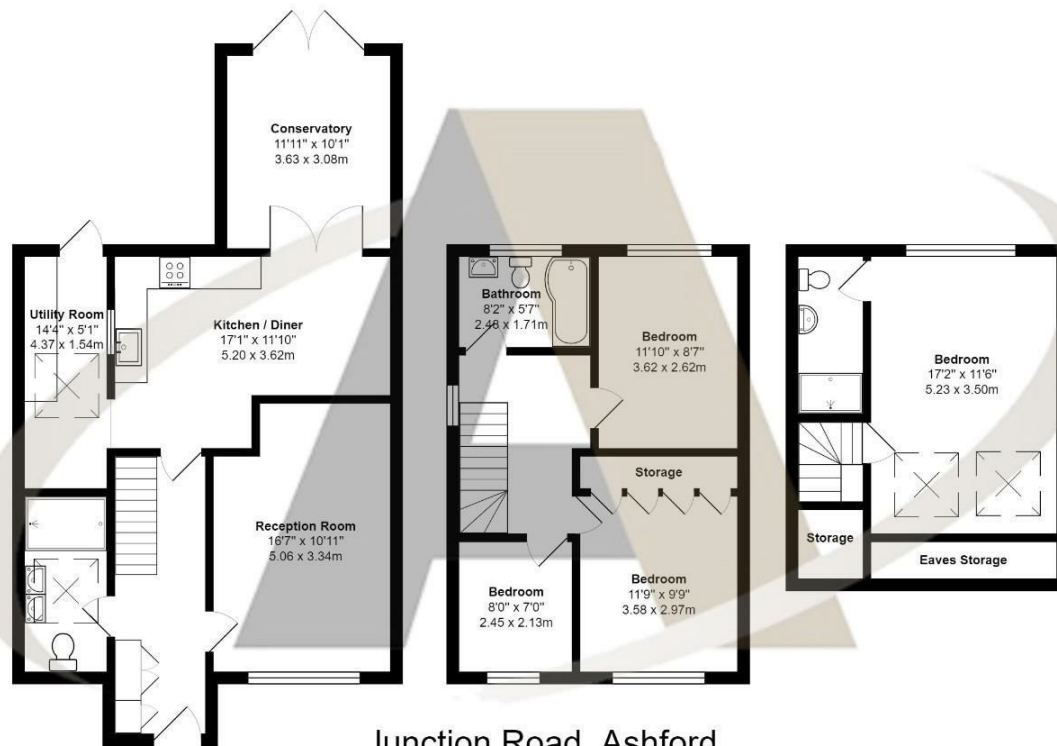
67 Junction Road, Ashford, TW15 1NJ

This exceptional family home, arranged over three well-designed floors, is located in a highly sought-after residential area and offers an impressive amount of flexible living space. Upon entering, you're welcomed by a spacious hallway that seamlessly links the bright front-facing living room to a stunning kitchen diner that stretches across the rear of the property—ideal for family life and entertaining. A conservatory provides an additional reception room filled with natural light, while a practical utility room and a stylish shower room complete the ground floor. Every inch of this home reflects high-quality finishes and thoughtful upgrades throughout.

Upstairs, the first floor features three generously sized bedrooms—two comfortable doubles and a larger-than-average single—served by a beautifully appointed, fully tiled family bathroom with a modern suite and shower over bath. The second floor is dedicated to a luxurious primary bedroom, boasting excellent eaves storage and a contemporary en suite with a spacious walk-in shower. Outside, the home continues to impress with a well-maintained garden to the rear, perfect for outdoor living, and ample off-road parking at the front for multiple vehicles. With its superb layout and immaculate presentation, this property is already generating significant interest. Early viewings are highly recommended—contact Aspen Estate Agents, Ashford's market-leading sales team, to arrange yours today.



Floor Plan



Junction Road, Ashford

Total Area: 1493 ft² ... 138.7 m²

All measurements are approximate and for display purposes only



Features

- Four Bedroom Semi-Detached House
- Three Bathrooms
- Rear Garden
- Separate Lounge and Conservatory
- Popular Residential Location
- Large Kitchen Diner
- Utility Room
- Off Road Parking

Aspen Residential Services
77 Church Road, Ashford, Surrey, TW15 2PE
Tel: 01784 252 202
Email: enquiries@aspensalesandlettings.com



Tenure - Freehold Council Tax Band - D

