



7 Thetford Road, Ashford, TW15 3BW

£500,000

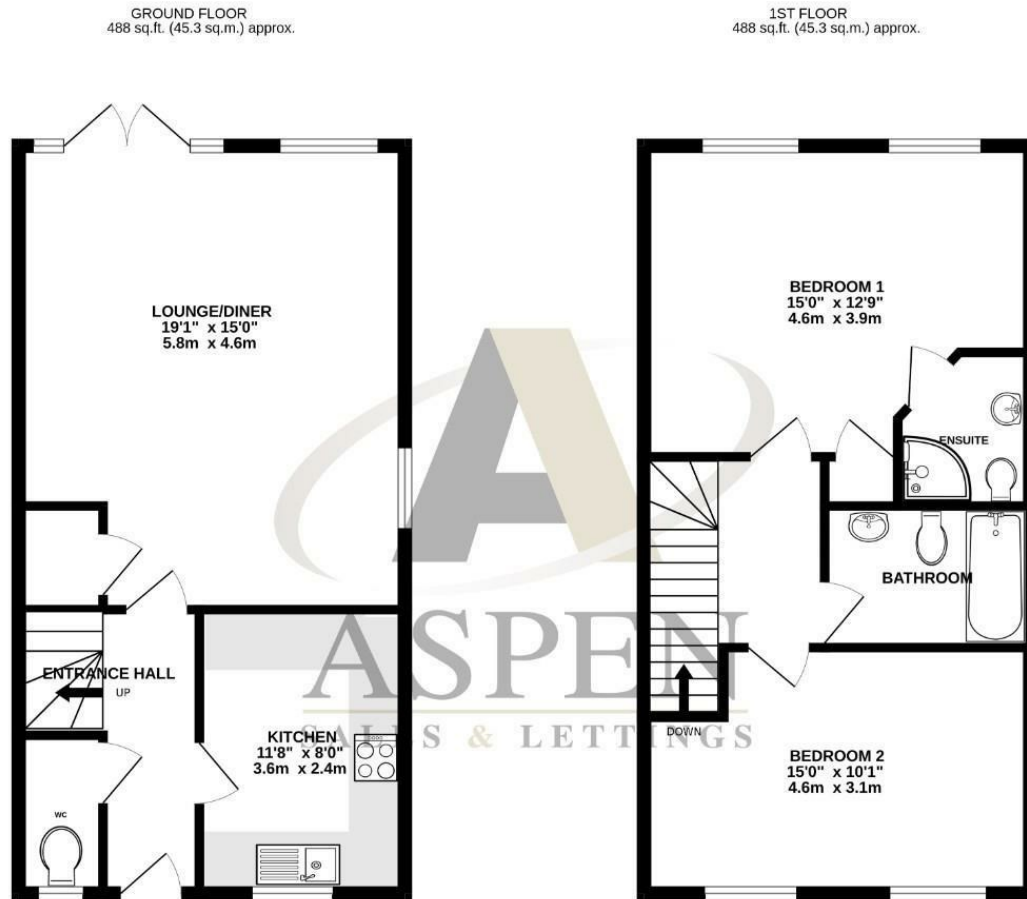
7 Thetford Road, Ashford, TW15 3BW

This attractive and very well-presented modern semi-detached family home, built in 2006 by the highly regarded Newman Homes Ltd, offers spacious and versatile accommodation throughout. Much larger than average for its style, the property boasts two generously sized double bedrooms, including a particularly large principal bedroom complete with an en-suite shower room. The ground floor features a welcoming entrance hall with convenient downstairs W.C., a separate modern kitchen, and a bright and spacious lounge/diner, perfect for both everyday living and entertaining.

Outside, the property continues to impress with its beautifully landscaped and mature rear garden, offering an ideal space for relaxation and outdoor enjoyment. To the front, there is a private driveway providing off-road parking alongside attractive flower beds that enhance the home's kerb appeal. Combining modern comfort with thoughtful design, this superb home is an excellent opportunity for buyers seeking a stylish, ready-to-move-into property in a desirable residential location. To view call Alex White and his market leading sales team at Aspen estate agents.



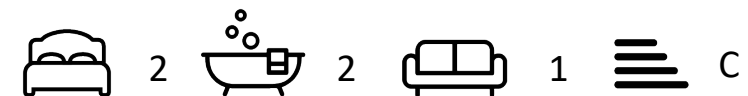
Floor Plan



Features

- Built in 2006 by the renowned local builder Newman Homes Ltd
- Spacious principal bedroom with en-suite shower room
- Separate modern kitchen with contemporary fittings
- Downstairs W.C. for added convenience
- Much larger than average two double bedroom semi-detached home
- Additional well-proportioned double bedroom
- Bright and generously sized lounge/diner, ideal for family living and entertaining
- Beautifully landscaped and mature rear garden with private driveway and attractive front flower beds

Aspen Residential Services
77 Church Road, Ashford, Surrey, TW15 2PE
Tel: 01784 252 202
Email: enquiries@aspensalesandlettings.com



Tenure - Freehold Council Tax Band - D

