



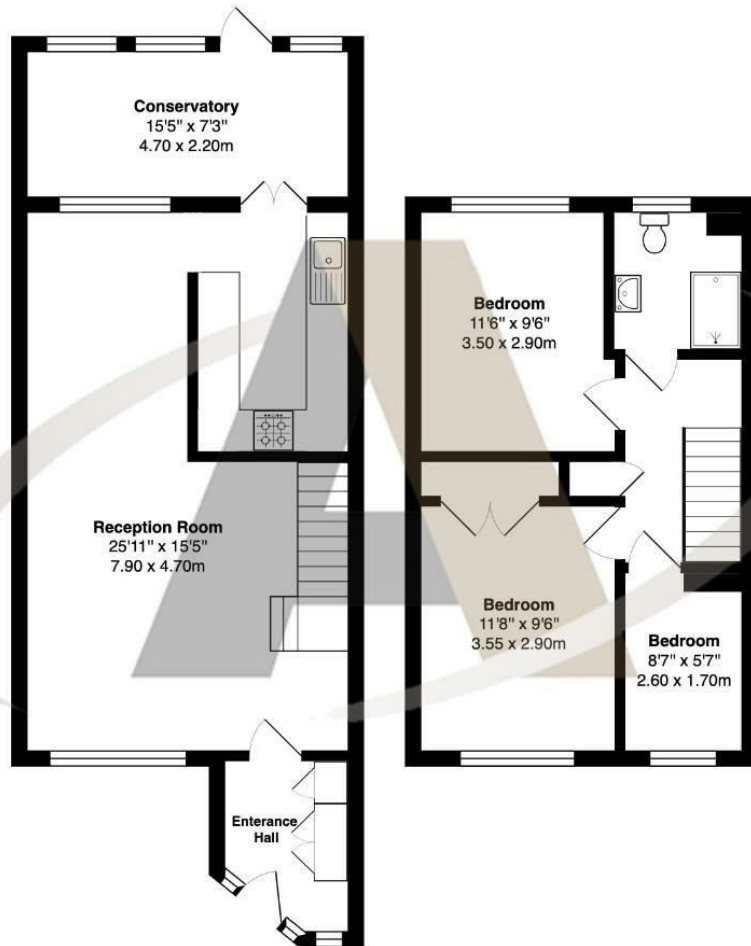
26 Town Lane, Staines-Upon-Thames, TW19 7RX

This beautifully presented three-bedroom house is perfectly situated within walking distance of local schools, convenient bus routes, the train station, and recreation parks, making it an ideal choice for families and commuters alike. Adding to its appeal is the proximity to a Tesco superstore, ensuring everyday essentials are just a short stroll away. The property features a spacious reception room, ideal for entertaining or family gatherings, and a bright, airy conservatory that overlooks the enclosed rear garden—a serene outdoor space perfect for relaxation or play.

Practicality meets comfort with a large private driveway, offering ample parking for up to three cars, a rare find in this sought-after area. Priced sensibly to encourage a swift sale, this home offers an exceptional opportunity for those looking to move into a well-connected and vibrant neighborhood. Don't miss out on this delightful property that combines convenience, charm, and value in one outstanding package!



Floor Plan



Town Lane, Stanwell, TW19 7RX

Total Area: 965 ft² ... 89.6 m²

All measurements are approximate and for display purposes only



Features

- Within walking distance of local schools, bus routes, the train station, and recreation parks.
- Features a large reception room, perfect for entertaining or family gatherings.
- Enclosed rear garden offers a private and serene environment.
- Located in a vibrant neighborhood with amenities catering to families and commuters.
- Close proximity to a Tesco superstore for everyday essentials.
- An airy space overlooking the enclosed rear garden, ideal for relaxation or play.
- Large private driveway accommodating up to three cars, a rare advantage.
- Sensibly priced for a quick sale, offering exceptional value for this sought-after area.

Aspen Residential Services
77 Church Road, Ashford, Surrey, TW15 2PE
Tel: 01784 252 202
Email: enquiries@aspensalesandlettings.com



Tenure - Freehold Council Tax Band - D

