



28 Everest Road, Staines-upon-Thames, TW19 7ED

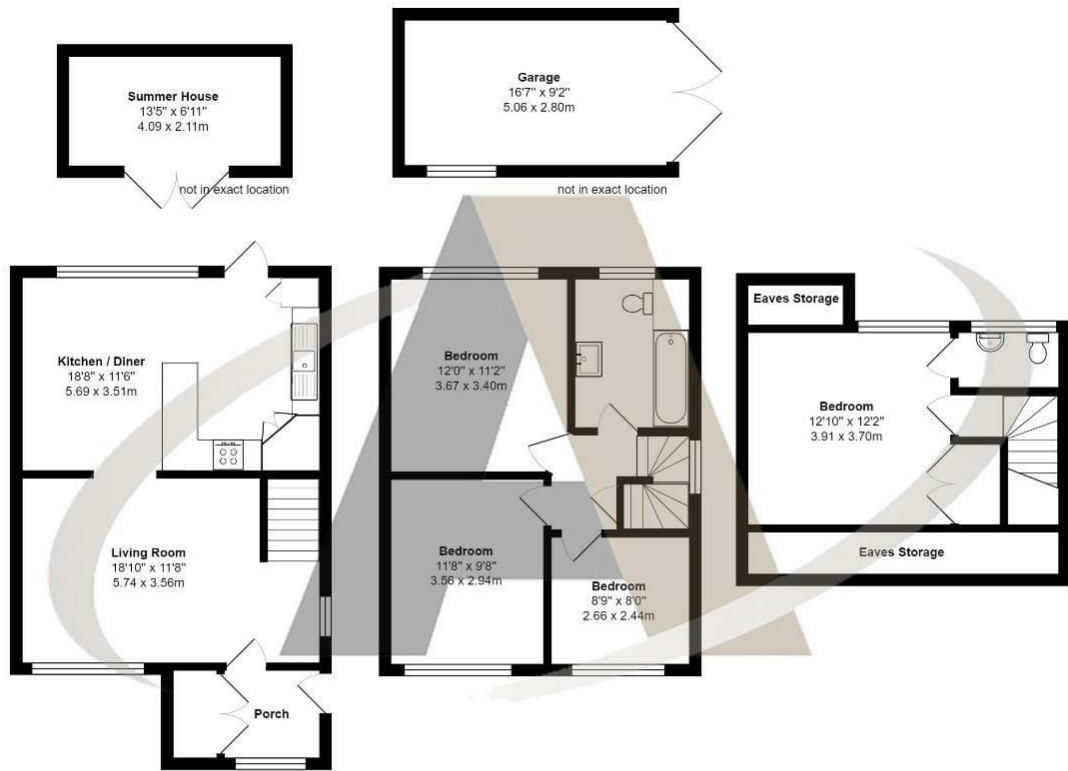
£475,000

28 Everest Road, Staines-upon-Thames, TW19 7ED

A very well presented semi detached family home with accommodation over three floors providing four good size bedrooms, family bathroom and ensuite cloakroom. The well equipped kitchen/diner is bright and spacious and opens out to a lovely rear garden with wooden summerhouse with power and light, ideal for a gym, office or children's den. A gated shared driveway provides access to a large detached garage with power and the front of the property provides parking. A lovely home, ideally situated for local schools and bus routes to Hatton Cross, Staines and Heathrow. Viewing highly recommended and can be booked by calling Aspen Residential.



Floor Plan



Everest Road, Stanwell
Total Area: 1541 ft² ... 143.2 m²
All measurements are approximate and for display purposes only



Features

- Four bedrooms
- Parking
- Spacious kitchen/diner
- Modern bathroom
- Very well presented
- Garage
- Accommodation over 3 floors
- Front aspect lounge
- Ensuite cloakroom
- Extended

Aspen Residential Services
77 Church Road, Ashford, Surrey, TW15 2PE
Tel: 01784 252 202
Email: enquiries@aspensalesandlettings.com



