



71 Hadrian Way, Staines-Upon-Thames, TW19 7HE

£230,000

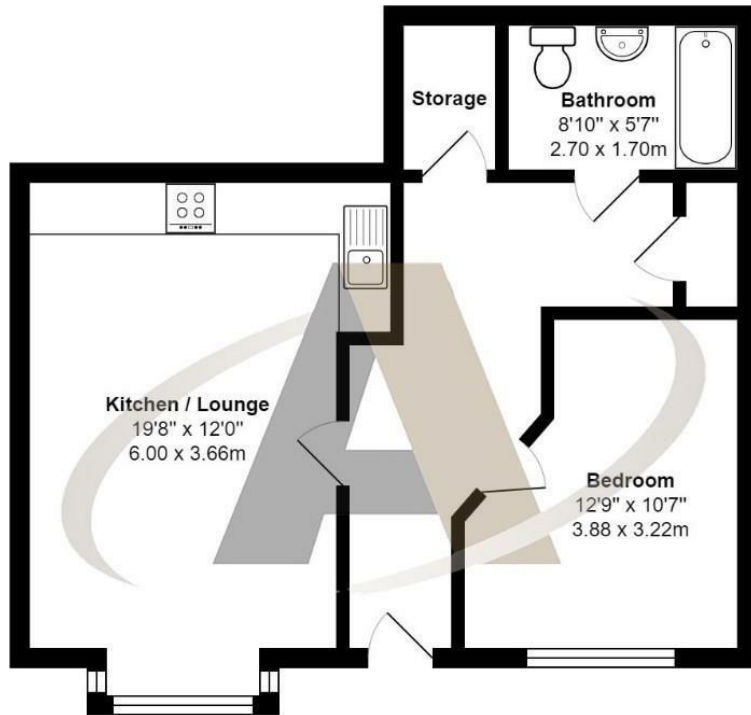
71 Hadrian Way, Staines-Upon-Thames, TW19 7HE

Perfect for first time buyers - this immaculate one bedroom, ground floor maisonette is just two years old and is presented in move in condition.

This property is larger than average and benefits from a large double bedroom, large reception room with open plan kitchen, modern bathroom and ample storage. There is an allocated parking space and additional parking for visitors. This property is already attracting a lot of attention and should be seen to be appreciated. Call Aspen Residential to arrange your viewing.



Floor Plan



Hadrian Way, Stanwell

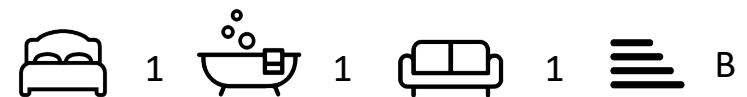
Total Area: 585 ft² ... 54.3 m²

All measurements are approximate and for display purposes only



Features

- Allocated Parking
- Ground Floor
- Popular Location
- 2 Years Old
- Large Reception Room
- Modern Kitchen & Bathroom
- 1 Bedroom Maisonette
- Viewing Advised



Tenure - Leasehold Council Tax Band -

