



A
ASPEN
SALES & LETTINGS

31 Maple Gardens, Staines-Upon-Thames, TW19 7BL

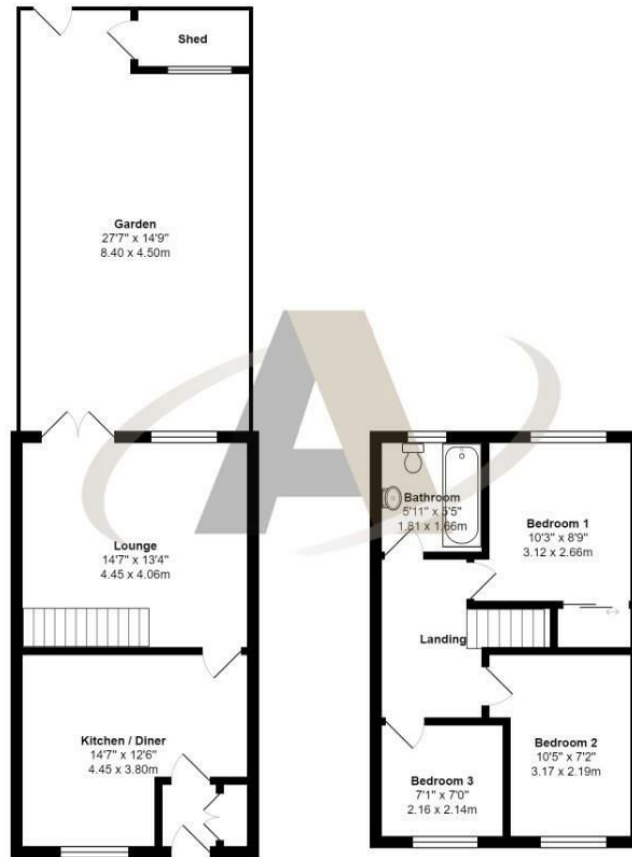
£460,000

31 Maple Gardens, Staines-Upon-Thames, TW19 7BL

This three bedroom terraced home has recently been refurbished and is situated in a cul-de-sac location. Accommodation comprises of lounge, kitchen/diner and three bedrooms. Other notable features include double glazing, two allocated parking spaces, re-fitted bathroom, new flooring, gas central heating and an enclosed private rear garden. The property also benefits from superb road links to the M25, M4 and M3. It also offers easy access to Heathrow Airport. NO ONWARD CHAIN



Floor Plan



Maple Gardens, Stanwell, TW19 7BL

Total Area: 827 ft² ... 76.8 m² (excluding garden)
 All measurements are approximate and for display purposes only



Features

- Three Bedrooms
- Kitchen/Diner
- Two Allocated Parking Spaces
- No Onward Chain
- Lounge
- Re-Fitted Bathroom
- Enclosed Private Rear Garden

