



27 Thetford Road, Ashford, TW15 3BW

Situated in a highly desirable and quiet location that offers easy access to Ashford station is this rarely available two double bedroom ground floor maisonette.

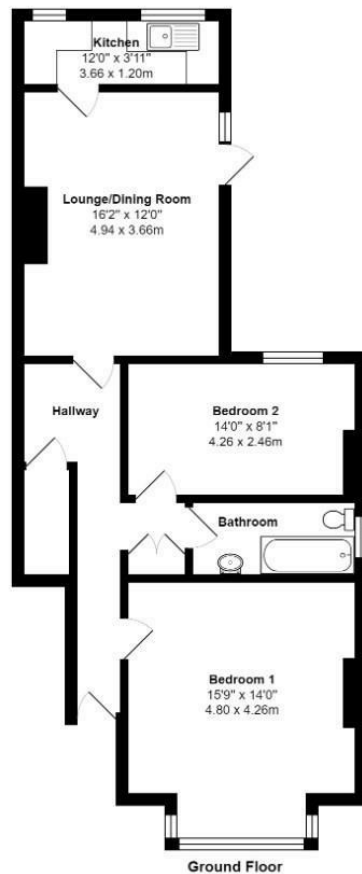
This home is offered in excellent condition throughout, the hallway leads through to a spacious lounge/dining room with a small kitchen beyond, the large master bedroom has a lovely bay window to the front whilst the second bedroom has views to the rear.

Being ground floor, it comes with the front garden and the rear garden that is accessed from the lounge/dining room also has the benefit of side access.

This property would make an ideal purchase for a first time buyer or investor especially as the lease is being extended and will be 125 years upon completion.



Floor Plan



Thetford Road, Ashford, TW15 3BW

Total Area: 757 ft² ... 70.4 m²

All measurements are approximate and for display purposes only



Features

- Rarely Available Ground Floor Maisonette
- Two Double Bedrooms
- Separate Kitchen
- Immaculate Condition Throughout
- Walking Distance To The Station
- Spacious Lounge/Diner
- Private Rear Garden
- Lease Being Renewed To 125 Years Upon Completion

Aspen Residential Services
77 Church Road, Ashford, Surrey, TW15 2PE
Tel: 01784 252 202
Email: enquiries@aspensalesandlettings.com



Tenure - Leasehold Council Tax Band -

