



1 Marchamont Close High Street, Egham, TW20 9HQ

£550,000

1 Marchamont Close High Street, Egham, TW20 9HQ

Built to an incredibly high specification by revered local developers Hoopers Homes is this pair of stunning three-bedroom semi detached houses. Situated in a private cul-de-sac location just off of the High Street, Egham. Giving superb access to Egham Railway Station and the new Magna Square development which will offer a host of shops, eateries and leisure facilities.

Accommodation comprises of large open plan living area with full-width bi-folding doors opening onto the garden. The kitchen area is installed to a high specification including integrated appliances and Silestone worktops. Upstairs there are three bedrooms, the main bedroom having an en-suite, and a family bathroom. The bathrooms are also installed to a high specification including porcelain tile and top-quality sanitary ware.

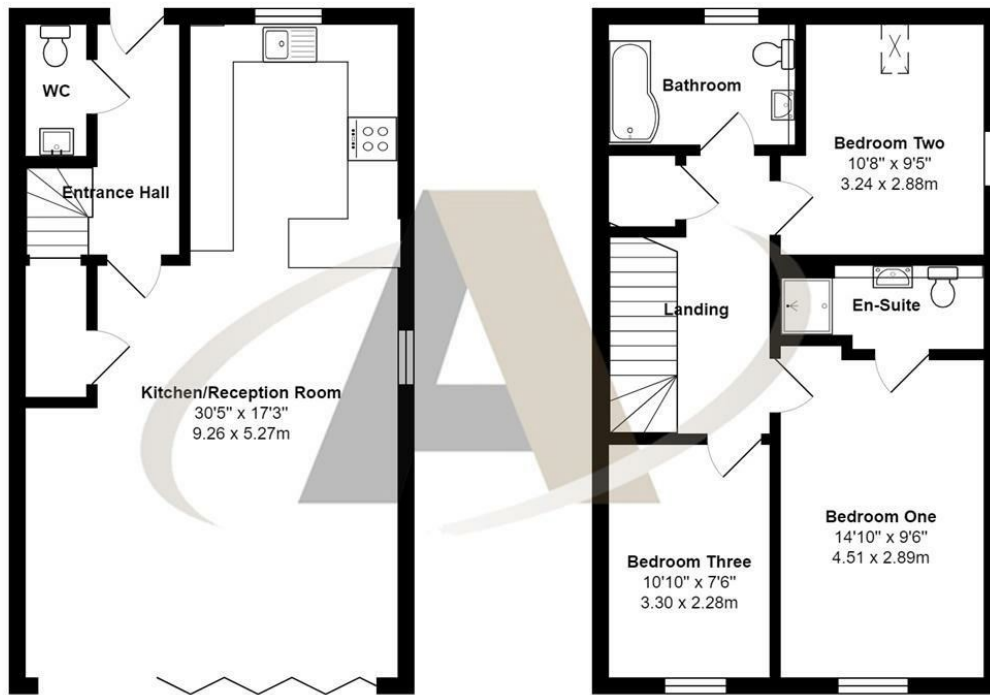
Outside this property has a lovely enclosed private rear garden which is laid to lawn with a good size Indian sandstone patio to the rear and block paved, off-road parking for two cars to the front.

There is so much to admire in these properties and other notable features include; underfloor heating to the ground floor, carpets on the first floor, pre-wired for sky tv, security alarm, wired for Sonos (or similar) on the ground floor, and a Samsung air-source heat pump making this house environmentally friendly and inexpensive to run.

Please call Aspen Estate Agents for more information and to arrange a viewing.



Floor Plan



Marchamont Close, Egham, TW20 9HQ

Total Area: 1057 ft² ... 98.2 m²

All measurements are approximate and for display purposes only



Features

- 3 Bedroom Semi-Detached House
- Short Walk to Magna Square development and other amenities
- High Specification Kitchen and Bathrooms
- Off Street Parking for 2 cars
- Rear garden of Indian Sandstone Patio and Lawn
- Short Walk to Egham Railway Station

