



7 Deacon House 16-18 Littleton Road, Ashford, TW15 1UQ

£160,000



## 7 Deacon House 16-18 Littleton Road, Ashford, TW15 1UQ

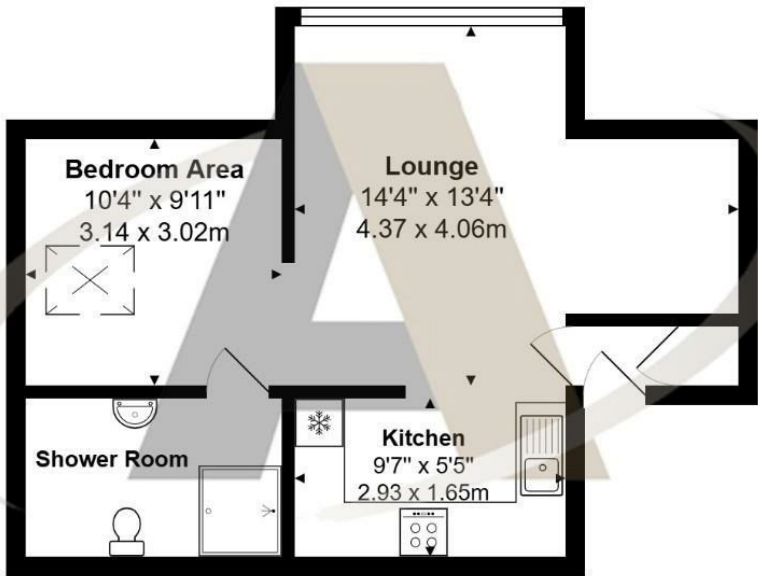
Nestled within a stylish and thoughtfully designed contemporary development by Howarth Homes PLC, this charming 2nd-floor 'super studio' offers modern living in a tranquil setting while remaining conveniently close to all amenities and excellent transport links. The apartment features a cleverly separated bedroom area, providing a sense of privacy and comfort, alongside a fully designated kitchen area, perfect for those who enjoy cooking or entertaining. The sleek, modern interiors are complemented by the development's superior insulation, ensuring low energy bills and year-round comfort.

Adding to its appeal, the property boasts an allocated parking space, making it ideal for commuters or those with a car. With a long 111-year lease and well-maintained communal areas, this apartment represents a low-maintenance and cost-effective lifestyle choice. Whether you're a first-time buyer or an investor, this delightful studio blends modern convenience with thoughtful design in a peaceful yet accessible location. Please call Alex White and his experience sales team at Aspen Estate Agents.



Floor Plan

Plot 7, Littleton Road, Ashford, TW15 1UQ



Total Area: 483 ft² ... 44.9 m²

All measurements are approximate and for display purposes only



Features

- Situated in a stylish and thoughtfully designed contemporary development by Howarth Homes PLC.
- Conveniently located close to all amenities and excellent transport links.
- Fully designated kitchen area, perfect for cooking and entertaining.
- Allocated parking space, ideal for commuters or car owners.
- Charming 2nd-floor 'super studio' offering modern living in a tranquil setting.
- Cleverly separated bedroom area, providing privacy and a cozy atmosphere.
- Sleek, modern interiors complemented by superior insulation for low energy bills.
- Benefits from a long 111-year lease



Tenure - Leasehold    Council Tax Band - B



