



56 Ashford Crescent, Ashford, TW15 3EB

Introducing a stunning two-bedroom semi-detached house, located in the highly popular Ashford Crescent, which offers easy access to local schools, the train station, and other essential, local amenities.

This charming property boasts a larger-than-average downstairs living space, providing ample room for entertaining family and friends. The separate kitchen is perfect for preparing and enjoying meals. The dining area has doors leading to the garden which provides natural light and easy access for indoor-outdoor living. The added convenience of a downstairs WC is a welcome feature.

Upstairs, you'll find two bedrooms, offering comfortable and peaceful retreats after a long day. The family bathroom is tastefully decorated, is partially tiled, and features a modern, white bathroom suite.

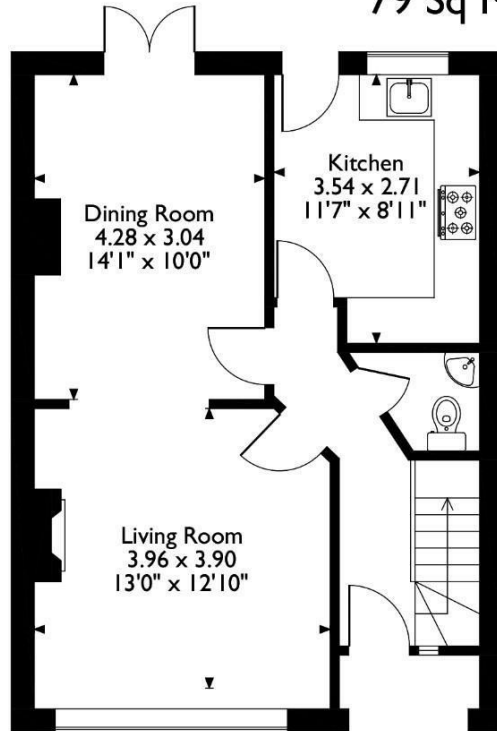
Outside this property has well proportioned rear garden consisting of a large patio area perfect for alfresco dining and a lawn area. To the front, there is a pretty front garden and off-road parking.

Overall, this property presents a rare opportunity to own a stylish and well-maintained house and should be seen to be appreciated. Call Aspen Estate Agents to book a viewing today and don't miss out on the chance to make this beautiful property your forever home.

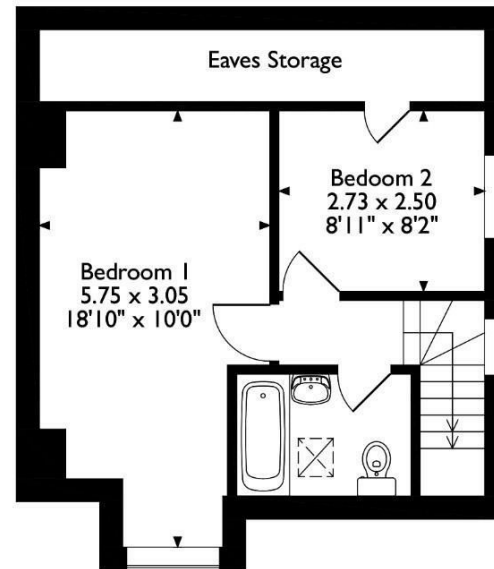


Floor Plan

56 Ashford Crescent Ashford, Surrey
Approximate Gross Internal Area
79 Sq M/850 Sq Ft



Ground Floor



First Floor

Please note that the location of doors, windows and other items are approximate and this floorplan is to be used for illustrative purposes only. Unauthorized reproduction is prohibited.



Features

- Popular location
- Large downstairs reception space
- Off road parking
- Close to schools, station and local amenities
- Pretty garden

