



212 Feltham Road, Ashford, TW15 1AS

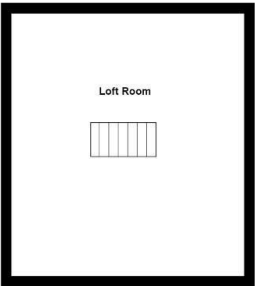
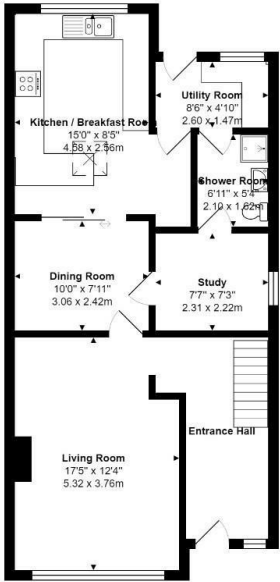
£530,000

212 Feltham Road, Ashford, TW15 1AS

This extended three bedroom semi detached home offers the potential to extend further (stpp). Accommodation comprises of living room, dining room, study, three bedrooms and loft room. Other notable features include kitchen/breakfast room, utility room, shower room, family bathroom, wc, driveway parking and enclosed rear garden. The property also benefits from being within a short distance to Ashford town centre and has good local road links to the M25.



Floor Plan



Feltham Road, Ashford, TW15 1AS
Total Area: 1630 ft² ... 151.4 m²
All measurements are approximate and for display purposes only



Features

- Potential To Extend (stpp)
- Living Room
- Study
- Utility Room
- Three Bedrooms
- Dining Room
- Kitchen/Breakfast Room
- Driveway Parking

