



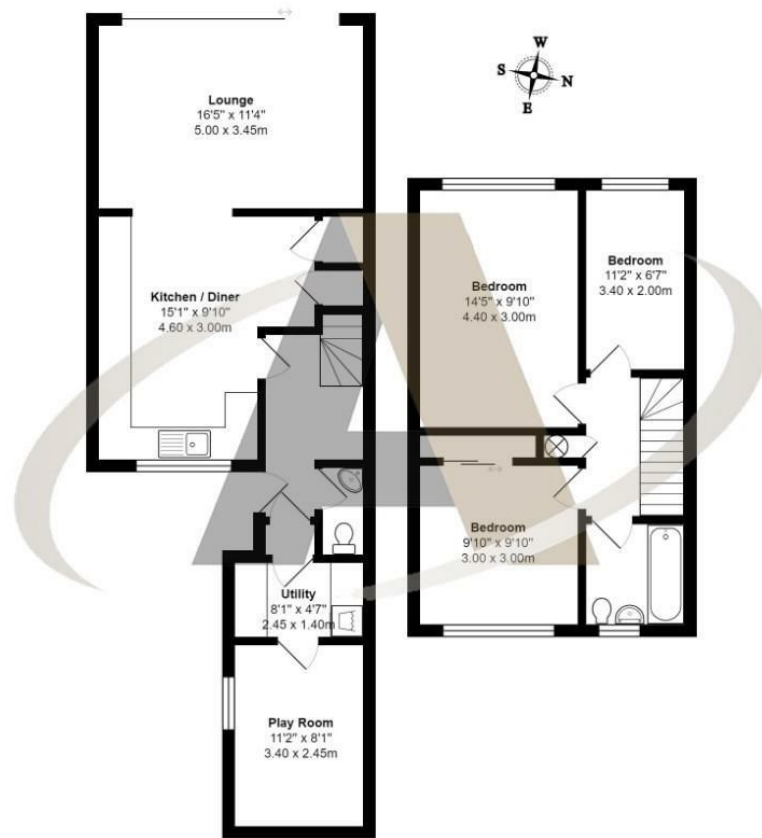
55 Hetherington Road  
Shepperton TW17 0SL  
£450,000

## 55 Hetherington Road, Shepperton, TW17 0SL

Aspen Residential are delighted to introduce this well presented end of terrace house in Charlton Village, Shepperton. Hetherington Road is a popular residential location offering easy access to many of the areas local amenities and the popular schools of Shepperton, Ashford and Sunbury. This three bedroom house is presented in move in condition and consists of generous kitchen / diner to the front of the house and a large lounge to the rear. The lounge has glass, sliding doors onto the westerly facing rear garden. The garden has a decking area, lawn of artificial grass and attractive borders. Upstairs there are three bedrooms and a modern family bathroom. The current owners have converted the garage to create a utility area and useful play room / study. This property is already attracting a lot of attention and prompt viewings are encouraged.



## Floor Plan



Hetherington Road, Shepperton

Total Area: 1054 ft<sup>2</sup> ... 97.9 m<sup>2</sup>

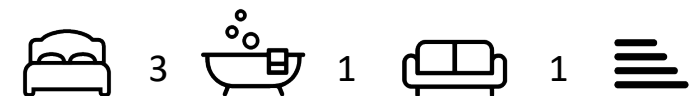
All measurements are approximate and for display purposes only

## Area Map



## Features

- No Onward Chain
- West Facing Garden
- Convenient for Schools
- Decked Patio Area
- 3 Bedrooms
- Large Kitchen / Diner
- Village location between Shepperton, Ashford & Sunbury
- Rear Aspect Lounge





**A**  
**ASPEN**  
SALES & LETTINGS