



59 Hogarth Avenue, Ashford, TW15 1QB

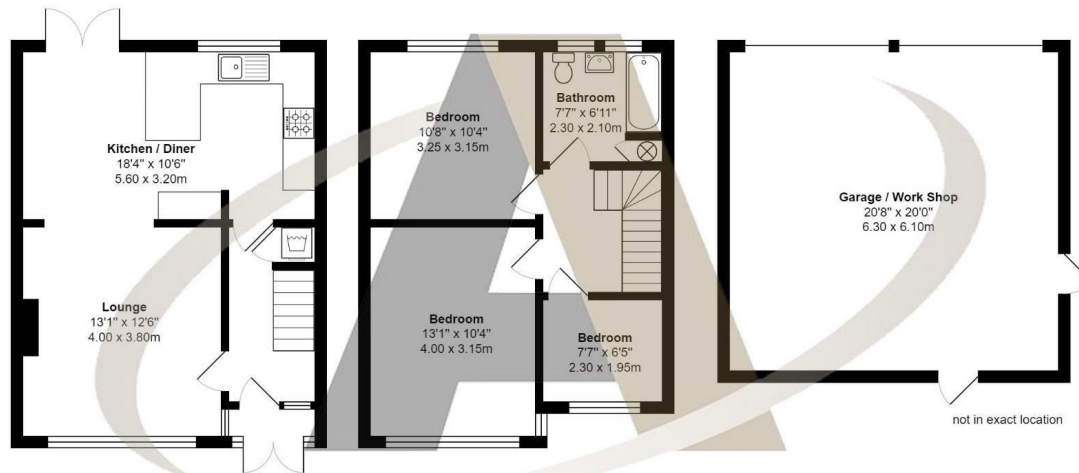
£485,000

59 Hogarth Avenue, Ashford, TW15 1QB

Aspen Residential are delighted to offer for sale a lovely example of a three bedroom semi detached family home, presented in good order throughout and situated in popular residential area, convenient for shops and the area's local schools. The living accommodation on the ground floor is bright and spacious with a front aspect lounge leading through to the kitchen/diner, the heart of the home and opening out to a good size rear garden. Upstairs are three delightfully decorated bedrooms and a family bathroom. The property has ample scope to extend (stpp) and has the added advantage of a large detached garage/workshop to the rear of the garden which is accessed via a service road to the rear. A great opportunity for a family looking for a home to move into and enjoy.



Floor Plan



Hogarth Avenue, Ashford

Total Area: 1284 ft² ... 119.3 m²
All measurements are approximate and for display purposes only



Features

- Modern Bathroom
- Popular Location for Schools and Transport
- 60 ft Rear Garden
- Large Garage / Workshop accessed by service road.
- Scope to Extend (stpp)
- 3 Bedroom Semi
- Open Plan Kitchen / Diner
- Viewings Saturday 23rd from 3pm by appointment only

