



408a London Road, Ashford, TW15 3AB

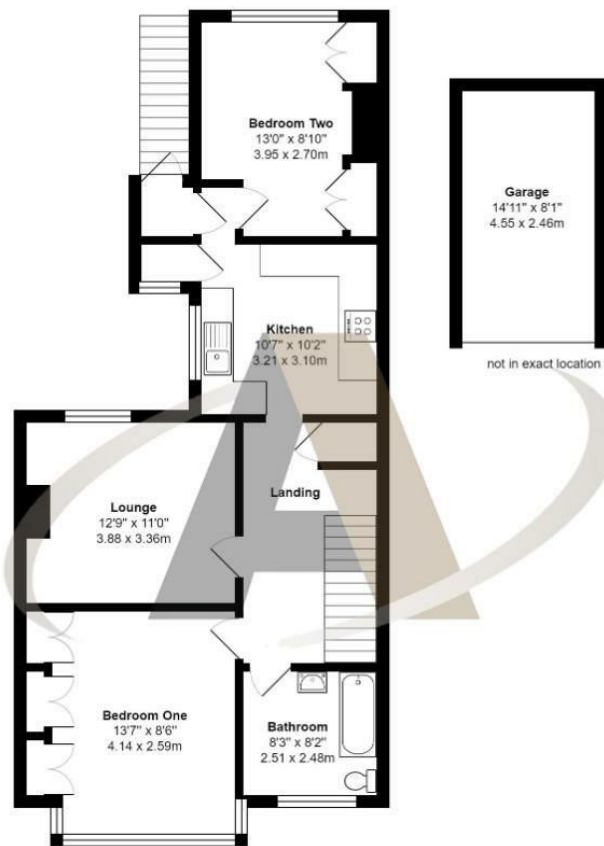
£315,000

408a London Road, Ashford, TW15 3AB

An opportunity to purchase a two bedroom first floor maisonette. Situated on London Road, Ashford which is a popular location offering easy access to the areas local bus routes, train stations and motorway links. This property is presented in very good condition throughout and consists of two double bedrooms, a large lounge, modern kitchen and a family bathroom. Outside the property has its own garden and a garage with rear access. Prompt viewings are encouraged and can be booked by calling Aspen Residential.



Floor Plan



London Road, Ashford

Total Area: 915 ft² ... 85.0 m²

All measurements are approximate and for display purposes only



Features

- Two Double Bedrooms
- Garage
- Modern Kitchen
- Convenient for Transport Links
- Freeholds
- Garden
- Share Of Freehold
- 1st Floor Maisonette
- Good Size Reception Room

Aspen Residential Services
77 Church Road, Ashford, Surrey, TW15 2PE
Tel: 01784 252 202
Email: enquiries@aspensalesandlettings.com



Tenure - Leasehold Council Tax Band -

