



11a Glebe Road, Egham, TW20 8BU

£1,100 Per Calendar Month

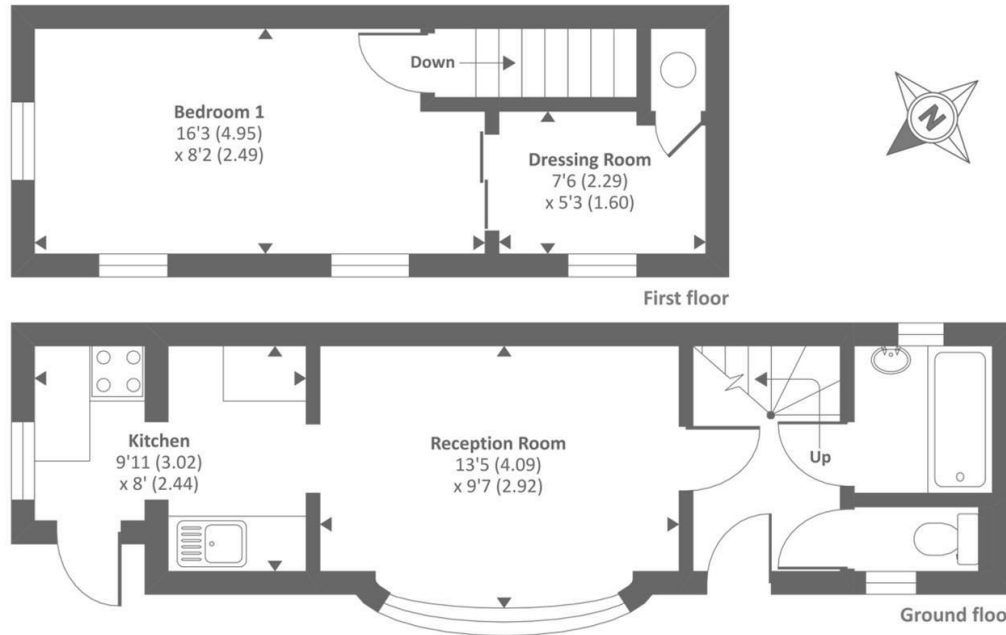
11a Glebe Road, Egham, TW20 8BU

A generous 1 bedroom house situated in between Staines and Egham town centres. Available now on an unfurnished basis this property should be viewed to be appreciated. Accommodation comprises a large lounge, kitchen, & bathroom with a separate WC on the ground floor and a larger-than-average double bedroom with a huge walk-in wardrobe on the first floor. This property is likely to attract a lot of interest and prompt viewings are encouraged. Call Aspen Estate Agents to arrange your viewing or to obtain the video tour.



Floor Plan

Approximate Area = 482 sq ft / 44.7 sq m (includes garage)
 For identification only - Not to scale



Floor plan produced in accordance with RICS Property Measurement Standards incorporating International Property Measurement Standards (IPMS2 Residential). © nichecom 2020. Produced for Chancellors Estate Agents. REF: 574821



Features

- 1 Bedroom House
- Walk in wardrobe
- Close to shops and transport
- Unfurnished
- Large bedroom
- Bathroom with separate WC
- Available immediately
- VIDEO TOUR AVAILABLE



Tenure - Council Tax Band - C

Aspen Residential Services
 77 Church Road, Ashford, Surrey, TW15 2PE
 Tel: 01784 252 202
 Email: enquiries@aspensalesandlettings.com

